



PKR1 rabbit pAb

Cat No.:ES3231

For research use only

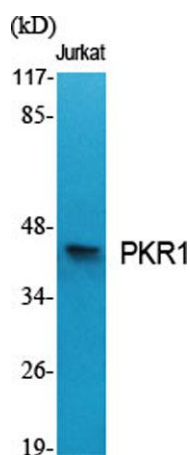
Overview

Product Name	PKR1 rabbit pAb
Host species	Rabbit
Applications	WB; IF;ELISA;IHC
Species Cross-Reactivity	Human;Mouse;Rat
Recommended dilutions	WB 1:500-2000; IF/ICC 1:100-500;ELISA 1:5000-20000;IHC-p 1:100-500
Immunogen	The antiserum was produced against synthesized peptide derived from human PKR1. AA range:19-68
Specificity	PKR1 Polyclonal Antibody detects endogenous levels of PKR1 protein.
Formulation	Liquid in PBS containing 50% glycerol, 0.5% BSA and 0.02% sodium azide.
Storage	Store at -20°C. Avoid repeated freeze-thaw cycles.
Protein Name	Prokineticin receptor 1
Gene Name	PROKR1
Cellular localization	Cell membrane; Multi-pass membrane protein.
Purification	The antibody was affinity-purified from rabbit antiserum by affinity-chromatography using epitope-specific immunogen.
Clonality	Polyclonal
Concentration	1 mg/ml
Observed band	45kD
Human Gene ID	10887
Human Swiss-Prot Number	Q8TCW9
Alternative Names	PROKR1; GPR73; PKR1; Prokineticin receptor 1; PK-R1; G-protein coupled receptor 73; G-protein coupled receptor ZAQ; GPR73a
Background	prokineticin receptor 1(PROKR1) Homo sapiens This gene encodes a member of the G-protein-coupled receptor family. The encoded protein binds to prokineticins (1 and 2), leading to the activation of MAPK and STAT signaling pathways. Prokineticins are protein ligands involved in

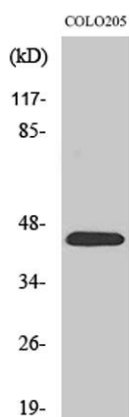




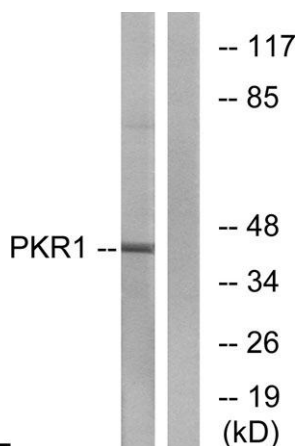
angiogenesis and inflammation. The encoded protein is expressed in peripheral tissues such as those comprising the circulatory system, lungs, reproductive system, endocrine system and the gastrointestinal system. The protein may be involved in signaling in human fetal ovary during initiation of primordial follicle formation. Sequence variants in this gene may be associated with recurrent miscarriage. [provided by RefSeq, Aug 2016],



Western Blot analysis of various cells using PKR1 Polyclonal Antibody



Western Blot analysis of COLO205 cells using PKR1 Polyclonal Antibody

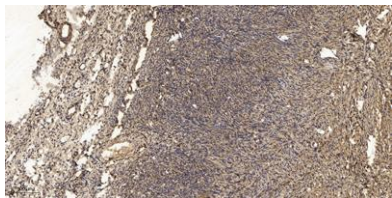


Western blot analysis of lysates from COLO cells, using PKR1 Antibody. The lane on the right is blocked with the synthesized peptide.





ELK Biotechnology



Immunohistochemical analysis of paraffin-embedded human oophoroma. 1, Antibody was diluted at 1:200(4° overnight). 2, Tris-EDTA,pH9.0 was used for antigen retrieval. 3,Secondary antibody was diluted at 1:200(room temperature, 45min).



+86-27-59760950

ELKbio@ELKbiotech.com

www.elkbiotech.com

23-2, No.388 Gaoxin 2nd Road,Wuhan East Lake Hi-tech Development Zone, Hubei , P.R.C