

PKA I β reg rabbit pAb

Cat No.:ES3219

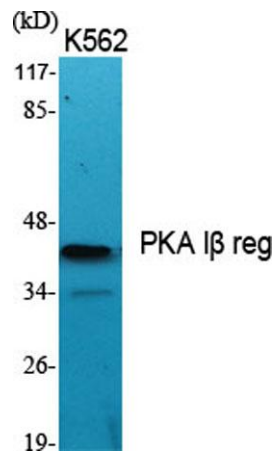
For research use only

Overview

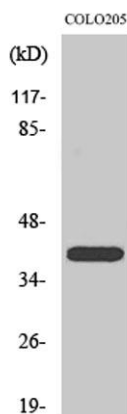
Product Name	PKA I β reg rabbit pAb
Host species	Rabbit
Applications	WB;IHC;IF;ELISA
Species Cross-Reactivity	Human;Mouse;Rat
Recommended dilutions	Western Blot: 1/500 - 1/2000. Immunohistochemistry: 1/100 - 1/300. ELISA: 1/20000. Not yet tested in other applications.
Immunogen	The antiserum was produced against synthesized peptide derived from human KAP1. AA range:106-155
Specificity	PKA I β reg Polyclonal Antibody detects endogenous levels of PKA I β reg protein.
Formulation	Liquid in PBS containing 50% glycerol, 0.5% BSA and 0.02% sodium azide.
Storage	Store at -20°C. Avoid repeated freeze-thaw cycles.
Protein Name	cAMP-dependent protein kinase type I-beta regulatory subunit
Gene Name	PRKAR1B
Cellular localization	Cell membrane .
Purification	The antibody was affinity-purified from rabbit antiserum by affinity-chromatography using epitope-specific immunogen.
Clonality	Polyclonal
Concentration	1 mg/ml
Observed band	43kD
Human Gene ID	5575
Human Swiss-Prot Number	P31321
Alternative Names	PRKAR1B; cAMP-dependent protein kinase type I-beta regulatory subunit
Background	The protein encoded by this gene is a regulatory subunit of cyclic AMP-dependent protein kinase A (PKA), which is involved in the signaling pathway of the second messenger cAMP. Two regulatory and



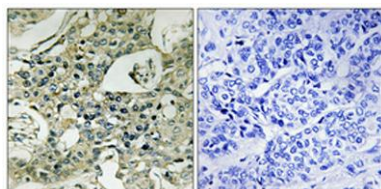
two catalytic subunits form the PKA holoenzyme, disbands after cAMP binding. The holoenzyme is involved in many cellular events, including ion transport, metabolism, and transcription. Several transcript variants encoding the same protein have been found for this gene. [provided by RefSeq, Aug 2015],



Western Blot analysis of various cells using PKA I β reg Polyclonal Antibody



Western Blot analysis of COLO205 cells using PKA I β reg Polyclonal Antibody

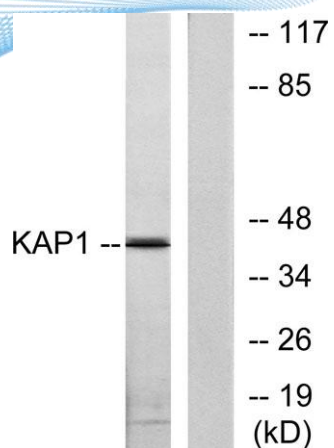


Immunohistochemical analysis of paraffin-embedded Human breast cancer. Antibody was diluted at 1:100(4° overnight). High-pressure and temperature Tris-EDTA,pH8.0 was used for antigen retrieval. Negative contrl (right) obtained from antibody was pre-absor





ELK Biotechnology



Western blot analysis of lysates from COLO205 cells, using KAP1 Antibody. The lane on the right is blocked with the synthesized peptide.



+86-27-59760950

ELKbio@ELKbiotech.com

www.elkbiotech.com

23-2, No.388 Gaoxin 2nd Road,Wuhan East Lake Hi-tech Development Zone, Hubei , P.R.C