



## PJA2 rabbit pAb

Cat No.:ES3216

For research use only

### Overview

Product Name	PJA2 rabbit pAb
Host species	Rabbit
Applications	WB;ELISA;IHC
Species Cross-Reactivity	Human;Rat;Mouse;
Recommended dilutions	WB 1:500-2000;IHC-p 1:50-300; ELISA 2000-20000
Immunogen	The antiserum was produced against synthesized peptide derived from human PJA2. AA range:141-190
Specificity	PJA2 Polyclonal Antibody detects endogenous levels of PJA2 protein.
Formulation	Liquid in PBS containing 50% glycerol, 0.5% BSA and 0.02% sodium azide.
Storage	Store at -20°C. Avoid repeated freeze-thaw cycles.
Protein Name	E3 ubiquitin-protein ligase Praja-2
Gene Name	PJA2
Cellular localization	Cytoplasm . Cell membrane . Endoplasmic reticulum membrane ; Peripheral membrane protein . Golgi apparatus membrane ; Peripheral membrane protein . Cell junction, synapse . Cell junction, synapse, postsynaptic density . Localizes at the cytoplasmic side of endoplasmic reticulum and Golgi apparatus. Expressed in the postsynaptic density region of synapses (By similarity). Colocalizes with PRKAR2A and PRKAR2B in the cytoplasm and the cell membrane. .
Purification	The antibody was affinity-purified from rabbit antiserum by affinity-chromatography using epitope-specific immunogen.
Clonality	Polyclonal
Concentration	1 mg/ml
Observed band	85kD
Human Gene ID	9867
Human Swiss-Prot Number	O43164

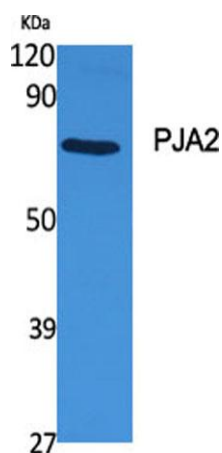




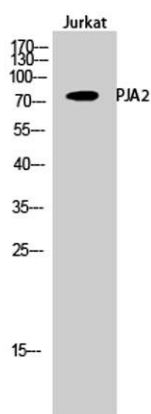
## Alternative Names

## Background

PJA2; KIAA0438; RNF131; E3 ubiquitin-protein ligase Praja-2; Praja2; RING finger protein 131  
function:Has E2-dependent E3 ubiquitin-protein ligase activity.,pathway:Protein modification; protein ubiquitination.,similarity:Contains 1 RING-type zinc finger.,subcellular location:Localizes at the cytoplasmic side of endoplasmic reticulum and Golgi apparatus. Expressed in the postsynaptic density region of synapses.,subunit:Binds ubiquitin-conjugating enzymes (E2s). In vitro, interacts with the ubiquitin-conjugating enzyme, UBE2D2.,

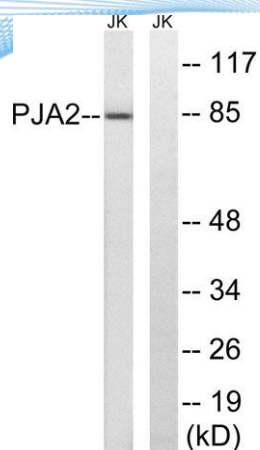


Western Blot analysis of various cells using PJA2 Polyclonal Antibody

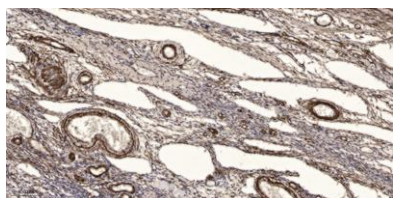


Western Blot analysis of Jurkat cells using PJA2 Polyclonal Antibody





Western blot analysis of lysates from Jurkat cells, using PJA2 Antibody. The lane on the right is blocked with the synthesized peptide.



Immunohistochemical analysis of paraffin-embedded human oophoroma. 1, Antibody was diluted at 1:200(4° overnight). 2, Tris-EDTA,pH9.0 was used for antigen retrieval. 3,Secondary antibody was diluted at 1:200(room temperature, 45min).

