

PITSLRE rabbit pAb

Cat No.:ES3214

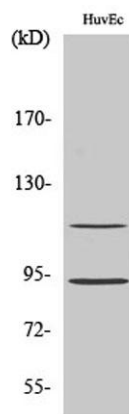
For research use only

Overview

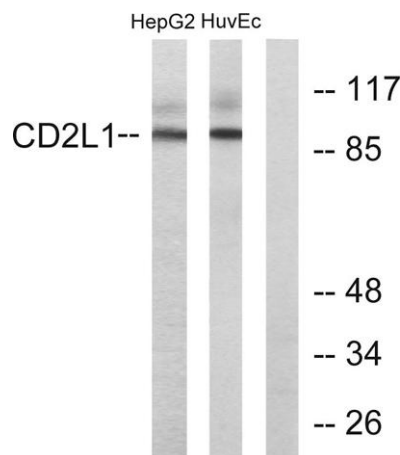
Product Name	PITSLRE rabbit pAb
Host species	Rabbit
Applications	WB;IHC;IF;ELISA
Species Cross-Reactivity	Human;Mouse
Recommended dilutions	Western Blot: 1/500 - 1/2000. Immunohistochemistry: 1/100 - 1/300. ELISA: 1/20000. Not yet tested in other applications.
Immunogen	The antiserum was produced against synthesized peptide derived from human CDC2L1. AA range:10-59
Specificity	PITSLRE Polyclonal Antibody detects endogenous levels of PITSLRE protein.
Formulation	Liquid in PBS containing 50% glycerol, 0.5% BSA and 0.02% sodium azide.
Storage	Store at -20°C. Avoid repeated freeze-thaw cycles.
Protein Name	Cyclin-dependent kinase 11B
Gene Name	CDK11B
Cellular localization	Cytoplasm. Nucleus.
Purification	The antibody was affinity-purified from rabbit antiserum by affinity-chromatography using epitope-specific immunogen.
Clonality	Polyclonal
Concentration	1 mg/ml
Observed band	92kD
Human Gene ID	984
Human Swiss-Prot Number	P21127
Alternative Names	CDK11B; CDC2L1; CDK11; PITSLREA; PK58; Cyclin-dependent kinase 11B; Cell division cycle 2-like protein kinase 1; CLK-1; Cell division protein kinase 11B; Galactosyltransferase-associated protein kinase p58/GTA; PITSLRE serine/threonine-prot
Background	This gene encodes a member of the serine/threonine protein kinase family. Members of



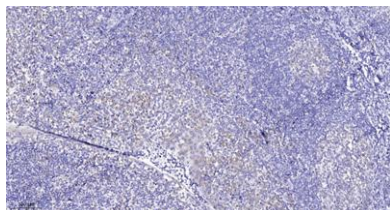
this kinase family are known to be essential for eukaryotic cell cycle control. Due to a segmental duplication, this gene shares very high sequence identity with a neighboring gene. These two genes are frequently deleted or altered in neuroblastoma. The protein kinase encoded by this gene can be cleaved by caspases and may play a role in cell apoptosis. Alternative splicing results in multiple transcript variants. [provided by RefSeq, Apr 2014],



Western Blot analysis of various cells using PITSLRE Polyclonal Antibody



Western blot analysis of lysates from HUVEC and HepG2 cells, using CDC2L1 Antibody. The lane on the right is blocked with the synthesized peptide.



Immunohistochemical analysis of paraffin-embedded human tonsil. 1, Antibody was diluted at 1:200(4° overnight). 2, Tris-EDTA,pH9.0 was used for antigen retrieval. 3,Secondary antibody was diluted at 1:200(room temperature, 30min).





ELK Biotechnology



+86-27-59760950

ELKbio@ELKbiotech.com

www.elkbiotech.com

23-2, No.388 Gaoxin 2nd Road,Wuhan East Lake Hi-tech Development Zone, Hubei , P.R.C