

pICln rabbit pAb

Cat No.:ES3206

For research use only

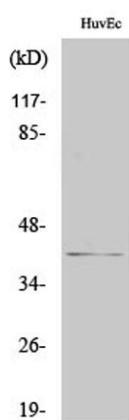
Overview

Product Name	pICln rabbit pAb
Host species	Rabbit
Applications	WB;ELISA;IHC
Species Cross-Reactivity	Human;Rat;Mouse;
Recommended dilutions	WB 1:500-2000;IHC-p 1:50-300; ELISA 2000-20000
Immunogen	The antiserum was produced against synthesized peptide derived from human CLNS1A. AA range:184-233
Specificity	pICln Polyclonal Antibody detects endogenous levels of pICln protein.
Formulation	Liquid in PBS containing 50% glycerol, 0.5% BSA and 0.02% sodium azide.
Storage	Store at -20°C. Avoid repeated freeze-thaw cycles.
Protein Name	Methylosome subunit pICln
Gene Name	CLNS1A
Cellular localization	Cytoplasm, cytosol . Nucleus . Cytoplasm, cytoskeleton . A small fraction is also associated with the cytoskeleton (PubMed:18984161).
Purification	The antibody was affinity-purified from rabbit antiserum by affinity-chromatography using epitope-specific immunogen.
Clonality	Polyclonal
Concentration	1 mg/ml
Observed band	37kD
Human Gene ID	1207
Human Swiss-Prot Number	P54105
Alternative Names	CLNS1A; CLCI; ICLN; Methylosome subunit pICln; Chloride channel; nucleotide sensitive 1A; Chloride conductance regulatory protein ICLn; I(ICln); Chloride ion current inducer protein; CLCI; Reticulocyte pICln
Background	This gene encodes a protein that functions in multiple regulatory pathways. The encoded protein

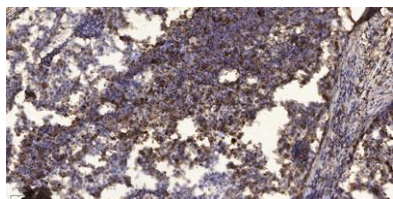




complexes with numerous cytosolic proteins and performs diverse functions including regulation of small nuclear ribonucleoprotein biosynthesis, platelet activation and cytoskeletal organization. The protein is also found associated with the plasma membrane where it functions as a chloride current regulator. Pseudogenes of this gene are found on chromosomes 1, 4 and 6. Several transcript variants encoding different isoforms have been found for this gene. [provided by RefSeq, Jul 2015],



Western Blot analysis of various cells using pICln Polyclonal Antibody



Immunohistochemical analysis of paraffin-embedded human Squamous cell carcinoma of lung. 1, Antibody was diluted at 1:200(4° overnight). 2, Tris-EDTA,pH9.0 was used for antigen retrieval. 3,Secondary antibody was diluted at 1:200(room temperature, 45min).

