

PHLDA3 rabbit pAb

Cat No.:ES3194

For research use only

Overview

Product Name	PHLDA3 rabbit pAb
Host species	Rabbit
Applications	WB;IHC;IF;ELISA
Species Cross-Reactivity	Human;Mouse;Rat
Recommended dilutions	Western Blot: 1/500 - 1/2000. Immunohistochemistry: 1/100 - 1/300. ELISA: 1/40000. Not yet tested in other applications.
Immunogen	The antiserum was produced against synthesized peptide derived from human PHLDA3. AA range:21-70
Specificity	PHLDA3 Polyclonal Antibody detects endogenous levels of PHLDA3 protein.
Formulation	Liquid in PBS containing 50% glycerol, 0.5% BSA and 0.02% sodium azide.
Storage	Store at -20°C. Avoid repeated freeze-thaw cycles.
Protein Name	Pleckstrin homology-like domain family A member 3
Gene Name	PHLDA3
Cellular localization	Cytoplasm . Membrane ; Peripheral membrane protein .
Purification	The antibody was affinity-purified from rabbit antiserum by affinity-chromatography using epitope-specific immunogen.
Clonality	Polyclonal
Concentration	1 mg/ml
Observed band	15kD
Human Gene ID	23612
Human Swiss-Prot Number	Q9Y5J5
Alternative Names	PHLDA3; TIH1; Pleckstrin homology-like domain family A member 3; TDAG51/Ipl homolog 1
Background	domain:The PH domain binds phosphoinositides with a broad specificity. It competes with the PH domain of AKT1 and directly interferes with AKT1 binding to phosphatidylinositol 4,5-bisphosphate



(PIP2) and phosphatidylinositol 3,4,5-triphosphate (PIP3), preventing AKT1 association to membrane lipids and subsequent activation of AKT1 signaling.,function:p53/TP53-regulated repressor of Akt/AKT1 signaling. Represses AKT1 by preventing AKT1-binding to membrane lipids, thereby inhibiting AKT1 translocation to the cellular membrane and activation. Contributes to p53/TP53-dependent apoptosis by repressing AKT1 activity. Its directs transcription regulation by p53/TP53 may explain how p53/TP53 can negatively regulate AKT1. May acts as a tumor suppressor.,induction:By p53/TP53; expression is directly activated by p53/TP53. p53/TP53 phosphorylation on 'Ser-15' is required to activate the PHLDA3 promoter.,miscellaneous:PHLDA3 genomic locus is frequently observed in primary lung cancers, suggesting a role in tumor suppression.,similarity:Belongs to the PHLDA3 family.,similarity:Contains 1 PH domain.,tissue specificity:Widely expressed with lowest expression in liver and spleen.,



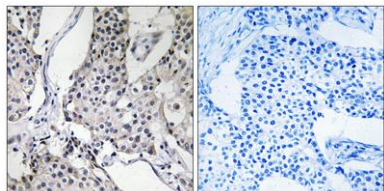
Western Blot analysis of various cells using PHLDA3 Polyclonal Antibody





ELK Biotechnology

Immunohistochemistry analysis of paraffin-embedded human breast carcinoma tissue, using PHLDA3 Antibody. The picture on the right is blocked with the synthesized peptide.



+86-27-59760950

ELKbio@ELKbiotech.com

www.elkbiotech.com

23-2, No.388 Gaoxin 2nd Road, Wuhan East Lake Hi-tech Development Zone, Hubei, P.R.C.