

# PHKG1 rabbit pAb

Cat No.:ES3193

For research use only

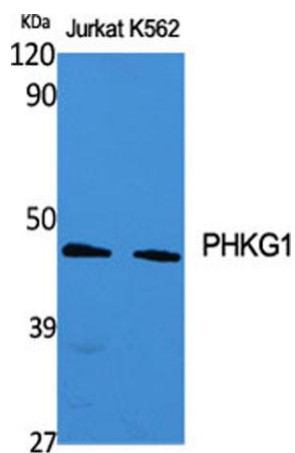
## Overview

Product Name	PHKG1 rabbit pAb
Host species	Rabbit
Applications	WB;IHC
Species Cross-Reactivity	Human;Rat;Mouse;
Recommended dilutions	WB 1:500-2000;IHC-p 1:50-300
Immunogen	The antiserum was produced against synthesized peptide derived from human PHKG1. AA range:241-290
Specificity	PHKG1 Polyclonal Antibody detects endogenous levels of PHKG1 protein.
Formulation	Liquid in PBS containing 50% glycerol, 0.5% BSA and 0.02% sodium azide.
Storage	Store at -20°C. Avoid repeated freeze-thaw cycles.
Protein Name	Phosphorylase b kinase gamma catalytic chain skeletal muscle isoform
Gene Name	PHKG1
Cellular localization	cytosol,phosphorylase kinase complex,
Purification	The antibody was affinity-purified from rabbit antiserum by affinity-chromatography using epitope-specific immunogen.
Clonality	Polyclonal
Concentration	1 mg/ml
Observed band	45kD
Human Gene ID	5260
Human Swiss-Prot Number	Q16816
Alternative Names	PHKG1; PHKG; Phosphorylase b kinase gamma catalytic chain; skeletal muscle isoform; Phosphorylase kinase subunit gamma-1
Background	This gene is a member of the Ser/Thr protein kinase family and encodes a protein with one protein kinase domain and two calmodulin-binding domains. This protein is the catalytic member of a 16 subunit protein kinase complex which contains

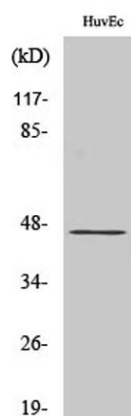




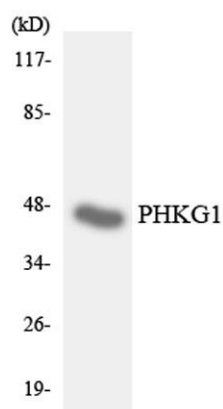
equimolar ratios of 4 subunit types. The complex is a crucial glycogenolytic regulatory enzyme. This gene has two pseudogenes at chromosome 7q11.21 and one at chromosome 11p11.12. Multiple transcript variants encoding different isoforms have been found for this gene. [provided by RefSeq, May 2012],



Western Blot analysis of various cells using PHKG1 Polyclonal Antibody



Western Blot analysis of HepG2 cells using PHKG1 Polyclonal Antibody

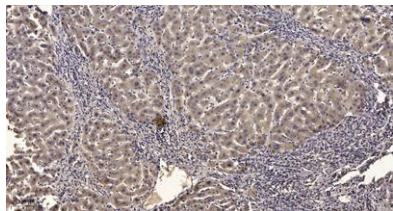


Western blot analysis of the lysates from HUVEC cells using PHKG1 antibody.





**ELK Biotechnology**



Immunohistochemical analysis of paraffin-embedded human liver cancer. 1, Antibody was diluted at 1:200(4° overnight). 2, Tris-EDTA,pH9.0 was used for antigen retrieval. 3,Secondary antibody was diluted at 1:200(room temperature, 45min).



+86-27-59760950

[ELKbio@ELKbiotech.com](mailto:ELKbio@ELKbiotech.com)

[www.elkbiotech.com](http://www.elkbiotech.com)

23-2, No.388 Gaoxin 2nd Road,Wuhan East Lake Hi-tech Development Zone, Hubei , P.R.C