



# PHF3 rabbit pAb

Cat No.:ES3192

For research use only

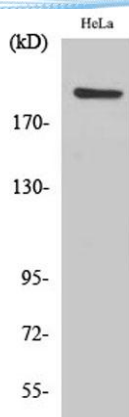
## Overview

Product Name	PHF3 rabbit pAb
Host species	Rabbit
Applications	WB;IHC;IF;ELISA
Species Cross-Reactivity	Human;Mouse
Recommended dilutions	Western Blot: 1/500 - 1/2000. Immunohistochemistry: 1/100 - 1/300. ELISA: 1/40000. Not yet tested in other applications.
Immunogen	The antiserum was produced against synthesized peptide derived from human PHF3. AA range:1990-2039
Specificity	PHF3 Polyclonal Antibody detects endogenous levels of PHF3 protein.
Formulation	Liquid in PBS containing 50% glycerol, 0.5% BSA and 0.02% sodium azide.
Storage	Store at -20°C. Avoid repeated freeze-thaw cycles.
Protein Name	PHD finger protein 3
Gene Name	PHF3
Cellular localization	
Purification	The antibody was affinity-purified from rabbit antiserum by affinity-chromatography using epitope-specific immunogen.
Clonality	Polyclonal
Concentration	1 mg/ml
Observed band	230kD
Human Gene ID	23469
Human Swiss-Prot Number	Q92576
Alternative Names	PHF3; KIAA0244; PHD finger protein 3
Background	This gene encodes a member of a PHD finger-containing gene family. This gene may function as a transcription factor and may be involved in glioblastomas development. Alternative splicing results in multiple transcript variants. [provided by RefSeq, Mar 2014],



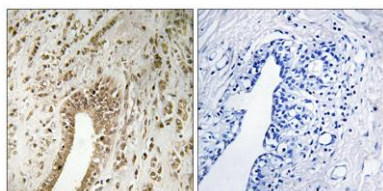


**ELK Biotechnology**



Western Blot analysis of various cells using PHF3  
Polyclonal Antibody cells nucleus extracted by Minute TM  
Cytoplasmic and Nuclear Fractionation kit  
(SC-003, Inventbiotech, MN, USA).

Immunohistochemistry analysis of paraffin-embedded  
human breast carcinoma tissue, using PHF3 Antibody. The  
picture on the right is blocked with the synthesized  
peptide.



+86-27-59760950

[ELKbio@ELKbiotech.com](mailto:ELKbio@ELKbiotech.com)

[www.elkbiotech.com](http://www.elkbiotech.com)

23-2, No.388 Gaoxin 2nd Road, Wuhan East Lake Hi-tech Development Zone, Hubei, P.R.C.