

PFK-2 liv/tes rabbit pAb

Cat No.:ES3184

For research use only

Overview

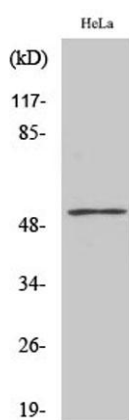
| | |
|-------------------------|--|
| Product Name | PFK-2 liv/tes rabbit pAb |
| Host species | Rabbit |
| Applications | WB;ELISA;IHC |
| Species | Human;Mouse;Rat |
| Cross-Reactivity | |
| Recommended dilutions | WB 1:500-2000;IHC-p 1:50-300; ELISA 2000-20000 |
| Immunogen | The antiserum was produced against synthesized peptide derived from human PFKFB1/4. AA range:331-380 |
| Specificity | PFK-2 liv/tes Polyclonal Antibody detects endogenous levels of PFK-2 liv/tes protein. |
| Formulation | Liquid in PBS containing 50% glycerol, 0.5% BSA and 0.02% sodium azide. |
| Storage | Store at -20°C. Avoid repeated freeze-thaw cycles. |
| Protein Name | 6-phosphofructo-2-kinase/fructose-2,6-biphosphatase 1/4 |
| Gene Name | PFKFB1/PFKFB4 |
| Cellular localization | cytosol,6-phosphofructo-2-kinase/fructose-2,6-biphosphatase complex, |
| Purification | The antibody was affinity-purified from rabbit antiserum by affinity-chromatography using epitope-specific immunogen. |
| Clonality | Polyclonal |
| Concentration | 1 mg/ml |
| Observed band | 54kD |
| Human Gene ID | 5207/5210 |
| Human Swiss-Prot Number | P16118/Q16877 |
| Alternative Names | PFKFB1; F6PK; PFRX; 6-phosphofructo-2-kinase/fructose-2; 6-bisphosphatase 1; 6PF-2-K/Fru-2,6-P2ase 1; PFK/FPase 1; 6PF-2-K/Fru-2,6-P2ase liver isozyme; PFKFB4; 6-phosphofructo-2-kinase/fructose-2,6-bisphosphatase 4; 6PF-2-K/Fru-2,6-P2ase 4; |
| Background | This gene encodes a member of the family of bifunctional 6-phosphofructo-2-kinase:fructose-2,6-biphosphatase |



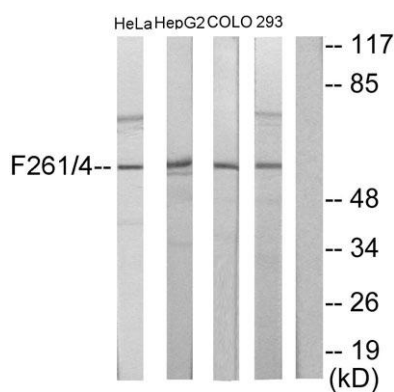


enzymes. The enzyme forms a homodimer that catalyzes both the synthesis and degradation of fructose-2,6-biphosphate using independent catalytic domains.

Fructose-2,6-biphosphate is an activator of the glycolysis pathway and an inhibitor of the gluconeogenesis pathway. Consequently, regulating fructose-2,6-biphosphate levels through the activity of this enzyme is thought to regulate glucose homeostasis. Multiple alternatively spliced transcript variants have been found for this gene. [provided by RefSeq, Nov 2012],



Western Blot analysis of various cells using PFK-2 liv/tes Polyclonal Antibody

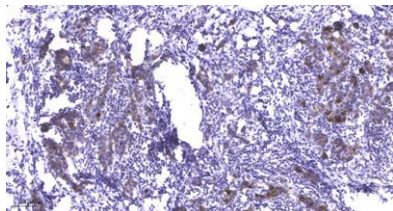


Western blot analysis of lysates from HeLa, HepG2, COLO205, and 293 cells, using PFKFB1/4 Antibody. The lane on the right is blocked with the synthesized peptide.





ELK Biotechnology



Immunohistochemical analysis of paraffin-embedded human Breast cancer. 1, Antibody was diluted at 1:200(4° overnight). 2, Tris-EDTA,pH9.0 was used for antigen retrieval. 3,Secondary antibody was diluted at 1:200(room temperature, 45min).



+86-27-59760950

ELKbio@ELKbiotech.com

www.elkbiotech.com

23-2, No.388 Gaoxin 2nd Road,Wuhan East Lake Hi-tech Development Zone, Hubei , P.R.C