

Olfactory receptor 4C6 rabbit pAb

Cat No.:ES3041

For research use only

Overview

Product Name	Olfactory receptor 4C6 rabbit pAb
Host species	Rabbit
Applications	WB;IF;ELISA
Species Cross-Reactivity	Human;Rat;Mouse;
Recommended dilutions	Western Blot: 1/500 - 1/2000. Immunofluorescence: 1/200 - 1/1000. ELISA: 1/40000. Not yet tested in other applications.
Immunogen	The antiserum was produced against synthesized peptide derived from human OR4C6. AA range:193-242
Specificity	Olfactory receptor 4C6 Polyclonal Antibody detects endogenous levels of Olfactory receptor 4C6 protein.
Formulation	Liquid in PBS containing 50% glycerol, 0.5% BSA and 0.02% sodium azide.
Storage	Store at -20°C. Avoid repeated freeze-thaw cycles.
Protein Name	Olfactory receptor 4C6
Gene Name	OR4C6
Cellular localization	Cell membrane; Multi-pass membrane protein.
Purification	The antibody was affinity-purified from rabbit antiserum by affinity-chromatography using epitope-specific immunogen.
Clonality	Polyclonal
Concentration	1 mg/ml
Observed band	35kD
Human Gene ID	219432
Human Swiss-Prot Number	Q8NH72
Alternative Names	OR4C6; Olfactory receptor 4C6; Olfactory receptor OR11-138
Background	olfactory receptor family 4 subfamily C member 6(OR4C6) Homo sapiens Olfactory receptors interact with odorant molecules in the nose, to initiate a neuronal response that triggers the

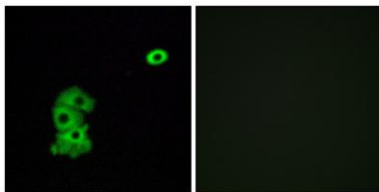


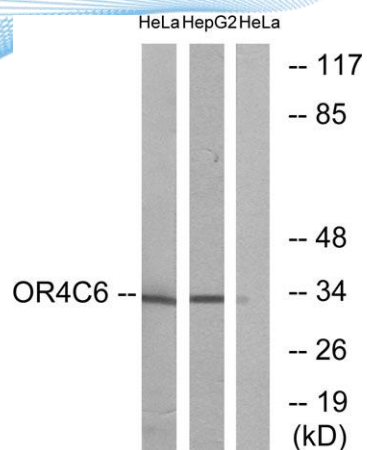
perception of a smell. The olfactory receptor proteins are members of a large family of G-protein-coupled receptors (GPCR) arising from single coding-exon genes. Olfactory receptors share a 7-transmembrane domain structure with many neurotransmitter and hormone receptors and are responsible for the recognition and G protein-mediated transduction of odorant signals. The olfactory receptor gene family is the largest in the genome. The nomenclature assigned to the olfactory receptor genes and proteins for this organism is independent of other organisms. [provided by RefSeq, Jul 2008],



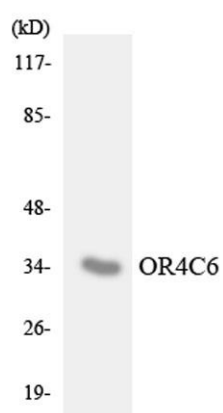
Western Blot analysis of various cells using Olfactory receptor 4C6 Polyclonal Antibody

Immunofluorescence analysis of A549 cells, using OR4C6 Antibody. The picture on the right is blocked with the synthesized peptide.





Western blot analysis of lysates from HeLa and HepG2 cells, using OR4C6 Antibody. The lane on the right is blocked with the synthesized peptide.



Western blot analysis of the lysates from HepG2 cells using OR4C6 antibody.

