

Olfactory receptor 2T2/35 rabbit pAb

Cat No.:ES3035

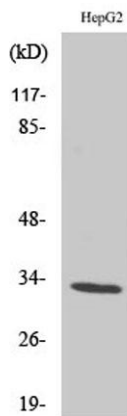
For research use only

Overview

Product Name	Olfactory receptor 2T2/35 rabbit pAb
Host species	Rabbit
Applications	WB;IF;ELISA
Species Cross-Reactivity	Human;Rat;Mouse;
Recommended dilutions	Western Blot: 1/500 - 1/2000. Immunofluorescence: 1/200 - 1/1000. ELISA: 1/10000. Not yet tested in other applications.
Immunogen	The antiserum was produced against synthesized peptide derived from human OR2T2/2T35. AA range:61-110
Specificity	Olfactory receptor 2T2/35 Polyclonal Antibody detects endogenous levels of Olfactory receptor 2T2/35 protein.
Formulation	Liquid in PBS containing 50% glycerol, 0.5% BSA and 0.02% sodium azide.
Storage	Store at -20°C. Avoid repeated freeze-thaw cycles.
Protein Name	Olfactory receptor 2T2/35
Gene Name	OR2T2/OR2T35
Cellular localization	Cell membrane; Multi-pass membrane protein.
Purification	The antibody was affinity-purified from rabbit antiserum by affinity-chromatography using epitope-specific immunogen.
Clonality	Polyclonal
Concentration	1 mg/ml
Observed band	33kD
Human Gene ID	401992/403244
Human Swiss-Prot Number	Q6IF00/Q8NGX2
Alternative Names	OR2T2; OR2T2P; Olfactory receptor 2T2; Olfactory receptor OR1-43; OR2T35; Olfactory receptor 2T35; Olfactory receptor OR1-66
Background	olfactory receptor family 2 subfamily T member 2(OR2T2) Homo sapiens Olfactory receptors interact with odorant molecules in the nose, to

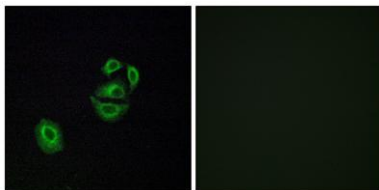


initiate a neuronal response that triggers the perception of a smell. The olfactory receptor proteins are members of a large family of G-protein-coupled receptors (GPCR) arising from single coding-exon genes. Olfactory receptors share a 7-transmembrane domain structure with many neurotransmitter and hormone receptors and are responsible for the recognition and G protein-mediated transduction of odorant signals. The olfactory receptor gene family is the largest in the genome. The nomenclature assigned to the olfactory receptor genes and proteins for this organism is independent of other organisms. [provided by RefSeq, Jul 2008],



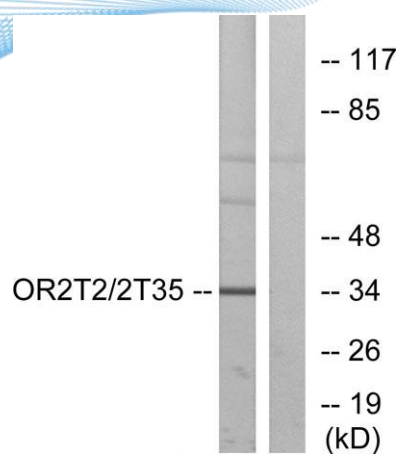
Western Blot analysis of various cells using Olfactory receptor 2T2/35 Polyclonal Antibody

Immunofluorescence analysis of A549 cells, using OR2T2/2T35 Antibody. The picture on the right is blocked with the synthesized peptide.

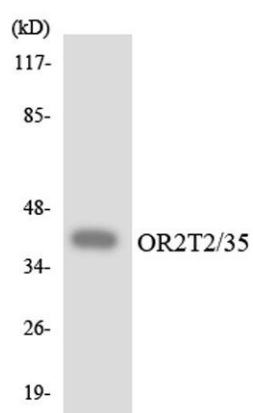




ELK Biotechnology



Western blot analysis of lysates from HepG2 cells, using OR2T2/2T35 Antibody. The lane on the right is blocked with the synthesized peptide.



Western blot analysis of the lysates from HeLa cells using OR2T2/35 antibody.



+86-27-59760950

ELKbio@ELKbiotech.com

www.elkbiotech.com

23-2, No.388 Gaoxin 2nd Road, Wuhan East Lake Hi-tech Development Zone, Hubei, P.R.C.