

Olfactory receptor 1D4/1D5 rabbit pAb

Cat No.:ES3022

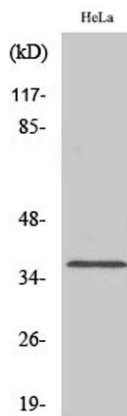
For research use only

Overview

Product Name	Olfactory receptor 1D4/1D5 rabbit pAb
Host species	Rabbit
Applications	WB;IF;ELISA
Species Cross-Reactivity	Human;Rat;Mouse;
Recommended dilutions	Western Blot: 1/500 - 1/2000. Immunofluorescence: 1/200 - 1/1000. ELISA: 1/20000. Not yet tested in other applications.
Immunogen	The antiserum was produced against synthesized peptide derived from human OR1D4/5. AA range:200-249
Specificity	Olfactory receptor 1D4/1D5 Polyclonal Antibody detects endogenous levels of Olfactory receptor 1D4/1D5 protein.
Formulation	Liquid in PBS containing 50% glycerol, 0.5% BSA and 0.02% sodium azide.
Storage	Store at -20°C. Avoid repeated freeze-thaw cycles.
Protein Name	Olfactory receptor 1D4/5
Gene Name	OR1D4/OR1D5
Cellular localization	Cell membrane; Multi-pass membrane protein.
Purification	The antibody was affinity-purified from rabbit antiserum by affinity-chromatography using epitope-specific immunogen.
Clonality	Polyclonal
Concentration	1 mg/ml
Observed band	38kD
Human Gene ID	8386
Human Swiss-Prot Number	P58170/P47884
Alternative Names	OR1D5; Olfactory receptor 1D5; Olfactory receptor 17-31; OR17-31; OR1D4; Olfactory receptor 1D4; Olfactory receptor 17-30; OR17-30
Background	olfactory receptor family 1 subfamily D member 5(OR1D5) Homo sapiens Olfactory receptors interact with odorant molecules in the nose, to



initiate a neuronal response that triggers the perception of a smell. The olfactory receptor proteins are members of a large family of G-protein-coupled receptors (GPCR) arising from single coding-exon genes. Olfactory receptors share a 7-transmembrane domain structure with many neurotransmitter and hormone receptors and are responsible for the recognition and G protein-mediated transduction of odorant signals. The olfactory receptor gene family is the largest in the genome. The nomenclature assigned to the olfactory receptor genes and proteins for this organism is independent of other organisms. [provided by RefSeq, Jul 2008],



Western Blot analysis of various cells using Olfactory receptor 1D4/1D5 Polyclonal Antibody diluted at 1:2000

Immunofluorescence analysis of MCF7 cells, using OR1D4/5 Antibody. The picture on the right is blocked with the synthesized peptide.

