

# Olfactory receptor 13H1 rabbit pAb

Cat No.:ES3019

For research use only

## Overview

Product Name	Olfactory receptor 13H1 rabbit pAb
Host species	Rabbit
Applications	WB;IF;ELISA
Species Cross-Reactivity	Human;Rat;Mouse;
Recommended dilutions	Western Blot: 1/500 - 1/2000. Immunofluorescence: 1/200 - 1/1000. ELISA: 1/20000. Not yet tested in other applications.
Immunogen	The antiserum was produced against synthesized peptide derived from human OR13H1. AA range:241-290
Specificity	Olfactory receptor 13H1 Polyclonal Antibody detects endogenous levels of Olfactory receptor 13H1 protein.
Formulation	Liquid in PBS containing 50% glycerol, 0.5% BSA and 0.02% sodium azide.
Storage	Store at -20°C. Avoid repeated freeze-thaw cycles.
Protein Name	Olfactory receptor 13H1
Gene Name	OR13H1
Cellular localization	Cell membrane; Multi-pass membrane protein.
Purification	The antibody was affinity-purified from rabbit antiserum by affinity-chromatography using epitope-specific immunogen.
Clonality	Polyclonal
Concentration	1 mg/ml
Observed band	35kD
Human Gene ID	347468
Human Swiss-Prot Number	Q8NG92/Q6IET8
Alternative Names	
Background	Olfactory receptors interact with odorant molecules in the nose, to initiate a neuronal response that triggers the perception of a smell. The olfactory receptor proteins are members of a large family of G-protein-coupled receptors (GPCR) arising from

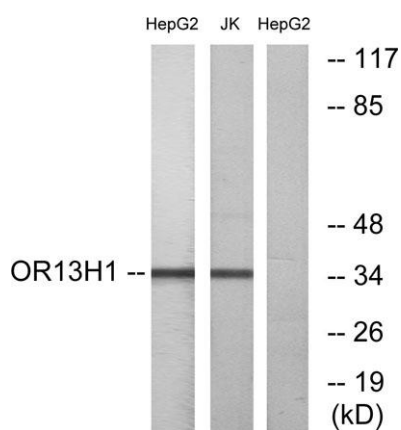




single coding-exon genes. Olfactory receptors share a 7-transmembrane domain structure with many neurotransmitter and hormone receptors and are responsible for the recognition and G protein-mediated transduction of odorant signals. The olfactory receptor gene family is the largest in the genome. The nomenclature assigned to the olfactory receptor genes and proteins for this organism is independent of other organisms. [provided by RefSeq, Jul 2008],



Western Blot analysis of various cells using Olfactory receptor 13H1 Polyclonal Antibody



Western blot analysis of lysates from HepG2 and Jurkat cells, using OR13H1 Antibody. The lane on the right is blocked with the synthesized peptide.

