



ODC rabbit pAb

Cat No.:ES3005

For research use only

Overview

Product Name	ODC rabbit pAb
Host species	Rabbit
Applications	WB;IHC;IF;ELISA
Species Cross-Reactivity	Human;Mouse;Rat
Recommended dilutions	Western Blot: 1/500 - 1/2000. Immunohistochemistry: 1/100 - 1/300. ELISA: 1/40000. Not yet tested in other applications.
Immunogen	The antiserum was produced against synthesized peptide derived from human SLC25A21. AA range:134-183
Specificity	ODC Polyclonal Antibody detects endogenous levels of ODC protein.
Formulation	Liquid in PBS containing 50% glycerol, 0.5% BSA and 0.02% sodium azide.
Storage	Store at -20°C. Avoid repeated freeze-thaw cycles.
Protein Name	Mitochondrial 2-oxodicarboxylate carrier
Gene Name	SLC25A21
Cellular localization	Mitochondrion inner membrane; Multi-pass membrane protein.
Purification	The antibody was affinity-purified from rabbit antiserum by affinity-chromatography using epitope-specific immunogen.
Clonality	Polyclonal
Concentration	1 mg/ml
Observed band	36kD
Human Gene ID	89874
Human Swiss-Prot Number	Q9BQT8
Alternative Names	SLC25A21; ODC; Mitochondrial 2-oxodicarboxylate carrier; Solute carrier family 25 member 21
Background	SLC25A21 is a homolog of the <i>S. cerevisiae</i> ODC proteins, mitochondrial carriers that transport C5-C7 oxodicarboxylates across inner mitochondrial membranes. One of the species transported by ODC

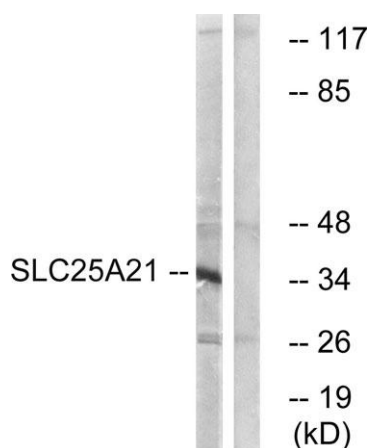
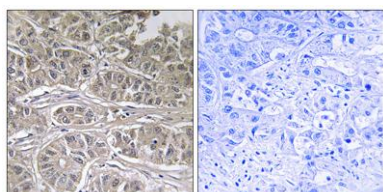


is 2-oxoadipate, a common intermediate in the catabolism of lysine, tryptophan, and hydroxylysine in mammals. Within mitochondria, 2-oxoadipate is converted into acetyl-CoA.[supplied by OMIM, Apr 2004],



Western Blot analysis of various cells using ODC Polyclonal Antibody

Immunohistochemistry analysis of paraffin-embedded human liver carcinoma tissue, using SLC25A21 Antibody. The picture on the right is blocked with the synthesized peptide.



Western blot analysis of lysates from HepG2 cells, using SLC25A21 Antibody. The lane on the right is blocked with the synthesized peptide.

