

# Oct-2 rabbit pAb

Cat No.:ES3001

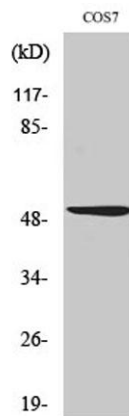
For research use only

## Overview

Product Name	Oct-2 rabbit pAb
Host species	Rabbit
Applications	WB;IHC;IF;ELISA
Species Cross-Reactivity	Human;Mouse;Monkey
Recommended dilutions	Western Blot: 1/500 - 1/2000. Immunohistochemistry: 1/100 - 1/300. Immunofluorescence: 1/200 - 1/1000. ELISA: 1/20000. Not yet tested in other applications.
Immunogen	The antiserum was produced against synthesized peptide derived from human OCT2. AA range:1-50
Specificity	Oct-2 Polyclonal Antibody detects endogenous levels of 40818 protein.
Formulation	Liquid in PBS containing 50% glycerol, 0.5% BSA and 0.02% sodium azide.
Storage	Store at -20°C. Avoid repeated freeze-thaw cycles.
Protein Name	POU domain class 2 transcription factor 2
Gene Name	POU2F2
Cellular localization	Cytoplasm . Nucleus.
Purification	The antibody was affinity-purified from rabbit antiserum by affinity-chromatography using epitope-specific immunogen.
Clonality	Polyclonal
Concentration	1 mg/ml
Observed band	52kD
Human Gene ID	5452
Human Swiss-Prot Number	P09086
Alternative Names	POU2F2; OCT2; OTF2; POU domain; class 2, transcription factor 2; Lymphoid-restricted immunoglobulin octamer-binding protein NF-A2; Octamer-binding protein 2; Oct-2; Octamer-binding transcription factor 2; OTF-2
Background	The protein encoded by this gene is a homeobox-containing transcription factor of the

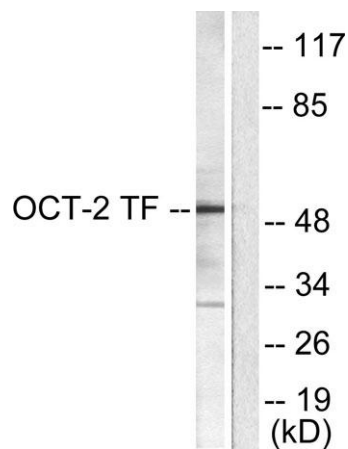
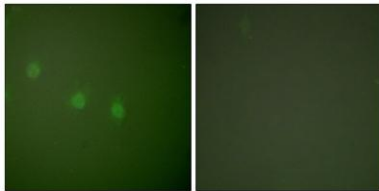


POU domain family. The encoded protein binds the octamer sequence 5'-ATTGTCAT-3', a common transcription factor binding site in immunoglobulin gene promoters. Several transcript variants encoding different isoforms have been found for this gene. [provided by RefSeq, Oct 2011],



Western Blot analysis of various cells using Oct-2 Polyclonal Antibody

Immunofluorescence analysis of COS7 cells, using OCT2 Antibody. The picture on the right is blocked with the synthesized peptide.

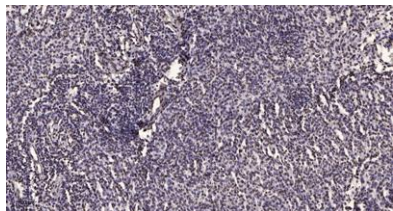


Western blot analysis of lysates from COS7 cells, using OCT2 Antibody. The lane on the right is blocked with the synthesized peptide.





**ELK Biotechnology**



Immunohistochemical analysis of paraffin-embedded human brain tumor. 1, Antibody was diluted at 1:200(4° overnight). 2, Tris-EDTA,pH9.0 was used for antigen retrieval. 3,Secondary antibody was diluted at 1:200(room temperature, 45min).



+86-27-59760950

[ELKbio@ELKbiotech.com](mailto:ELKbio@ELKbiotech.com)

[www.elkbiotech.com](http://www.elkbiotech.com)

23-2, No.388 Gaoxin 2nd Road,Wuhan East Lake Hi-tech Development Zone, Hubei , P.R.C