

Nogo A rabbit pAb

Cat No.:ES2970

For research use only

Overview

Product Name	Nogo A rabbit pAb
Host species	Rabbit
Applications	WB;IHC;IF;ELISA
Species Cross-Reactivity	Human;Mouse;Rat
Recommended dilutions	Western Blot: 1/500 - 1/2000. Immunohistochemistry: 1/100 - 1/300. ELISA: 1/10000. Not yet tested in other applications.
Immunogen	The antiserum was produced against synthesized peptide derived from human Nogo A. AA range:450-499
Specificity	Nogo A Polyclonal Antibody detects endogenous levels of Nogo A protein.
Formulation	Liquid in PBS containing 50% glycerol, 0.5% BSA and 0.02% sodium azide.
Storage	Store at -20°C. Avoid repeated freeze-thaw cycles.
Protein Name	Reticulon-4
Gene Name	RTN4
Cellular localization	[Isoform A]: Endoplasmic reticulum membrane ; Multi-pass membrane protein . Cell membrane; Multi-pass membrane protein ; Cytoplasmic side . Anchored to the membrane of the endoplasmic reticulum (ER) through 2 putative transmembrane domains. Localizes throughout the ER tubular network (PubMed:27619977). Co-localizes with TMEM33 at the ER sheets. .; [Isoform B]: Endoplasmic reticulum membrane ; Multi-pass membrane protein . Cell membrane ; Multi-pass membrane protein ; Extracellular side . Cell junction . Mainly located on endoplasmic reticulum tubules and sheet edges (PubMed:27786289). Upon ICAM1 engagement, redistributed toward endothelial junctions where interacts with CDH5 (PubMed:21183689). .; [Isoform C]: Endoplasmic





Purification

reticulum membrane ; Multi-pass membrane protein .

The antibody was affinity-purified from rabbit antiserum by affinity-chromatography using epitope-specific immunogen.

Clonality

Polyclonal

Concentration

1 mg/ml

Observed band

220kD

Human Gene ID

57142

Human Swiss-Prot Number

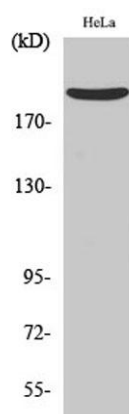
Q9NQC3

Alternative Names

RTN4; KIAA0886; NOGO; My043; SP1507; Reticulon-4; Foccen; Neurite outgrowth inhibitor; Nogo protein; Neuroendocrine-specific protein; NSP; Neuroendocrine-specific protein C homolog; RTN-x; Reticulon-5

Background

This gene belongs to the family of reticulon encoding genes. Reticulons are associated with the endoplasmic reticulum, and are involved in neuroendocrine secretion or in membrane trafficking in neuroendocrine cells. The product of this gene is a potent neurite outgrowth inhibitor which may also help block the regeneration of the central nervous system in higher vertebrates. Alternatively spliced transcript variants derived both from differential splicing and differential promoter usage and encoding different isoforms have been identified. [provided by RefSeq, Jul 2008],

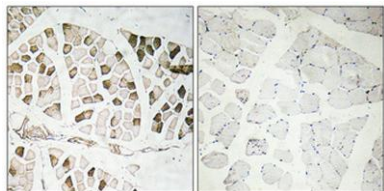


Western Blot analysis of various cells using Nogo A Polyclonal Antibody

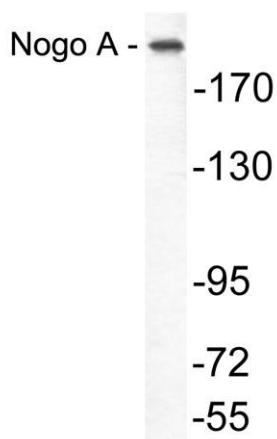
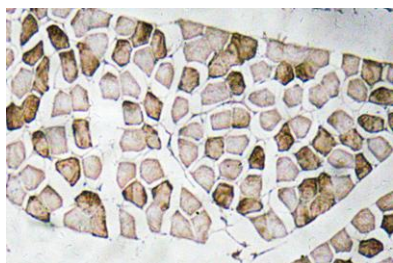




Immunohistochemical analysis of paraffin-embedded Human skeletal muscle. Antibody was diluted at 1:100(4° overnight). High-pressure and temperature Tris-EDTA,pH8.0 was used for antigen retrieval. Negative contrl (right) obtained from antibody was pre-absorbed by immunogen peptide.



Immunohistochemistry analysis of Nogo A antibody in paraffin-embedded human skeletal muscle tissue.



Western blot analysis of lysate from COLO205 cells, using Nogo A antibody.

