

# Neuroglycan C rabbit pAb

Cat No.:ES2931

For research use only

## Overview

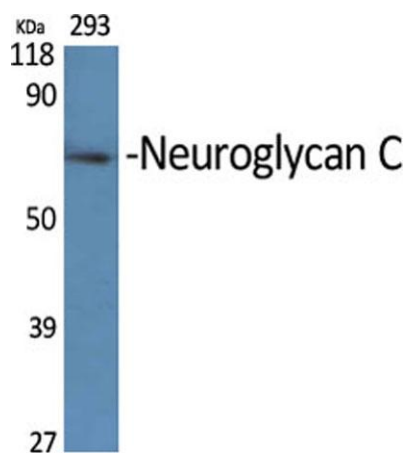
Product Name	Neuroglycan C rabbit pAb
Host species	Rabbit
Applications	WB;IHC
Species Cross-Reactivity	Human;Mouse;Rat
Recommended dilutions	WB 1:500-2000;IHC-p 1:50-300
Immunogen	The antiserum was produced against synthesized peptide derived from human CSPG5. AA range:211-260
Specificity	Neuroglycan C Polyclonal Antibody detects endogenous levels of Neuroglycan C protein.
Formulation	Liquid in PBS containing 50% glycerol, 0.5% BSA and 0.02% sodium azide.
Storage	Store at -20°C. Avoid repeated freeze-thaw cycles.
Protein Name	Chondroitin sulfate proteoglycan 5
Gene Name	CSPG5
Cellular localization	Cell membrane ; Single-pass type I membrane protein . Cell junction, synapse, synaptic cell membrane ; Single-pass type I membrane protein . Endoplasmic reticulum membrane ; Single-pass type I membrane protein . Golgi apparatus membrane ; Single-pass type I membrane protein . Cell surface . In neurons, localizes to synaptic junctions. Also detected in the endoplasmic reticulum and the Golgi. Partially enriched in lipid rafts. .
Purification	The antibody was affinity-purified from rabbit antiserum by affinity-chromatography using epitope-specific immunogen.
Clonality	Polyclonal
Concentration	1 mg/ml
Observed band	60kD
Human Gene ID	10675
Human Swiss-Prot Number	O95196
Alternative Names	CSPG5; CALEB; NGC; Chondroitin sulfate



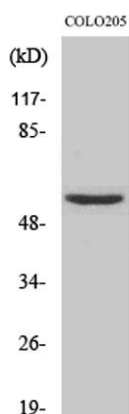


## Background

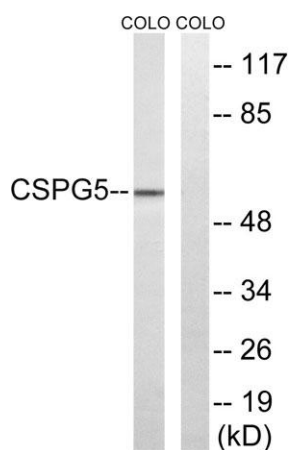
proteoglycan 5; Acidic leucine-rich EGF-like domain-containing brain protein; Neuroglycan C  
The protein encoded by this gene is a proteoglycan that may function as a neural growth and differentiation factor. Several transcript variants encoding different isoforms have been found for this gene. [provided by RefSeq, May 2011],



Western Blot analysis of various cells using Neuroglycan C Polyclonal Antibody



Western Blot analysis of HeLa cells using Neuroglycan C Polyclonal Antibody

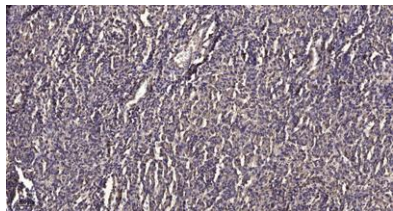


Western blot analysis of lysates from COLO and HeLa cells, using CSPG5 Antibody. The lane on the right is blocked with the synthesized peptide.





**ELK Biotechnology**



Immunohistochemical analysis of paraffin-embedded human meningioma. 1, Antibody was diluted at 1:200(4° overnight). 2, Tris-EDTA,pH9.0 was used for antigen retrieval. 3,Secondary antibody was diluted at 1:200(room temperature, 45min).



+86-27-59760950

ELKbio@ELKbiotech.com

[www.elkbiotech.com](http://www.elkbiotech.com)

23-2, No.388 Gaoxin 2nd Road,Wuhan East Lake Hi-tech Development Zone, Hubei , P.R.C