

# N33 rabbit pAb

Cat No.:ES2887

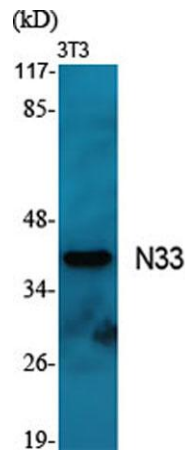
For research use only

## Overview

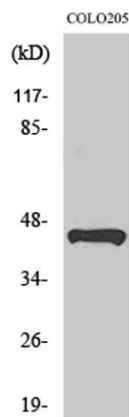
Product Name	N33 rabbit pAb
Host species	Rabbit
Applications	WB;IHC;IF;ELISA
Species Cross-Reactivity	Human;Mouse;Rat
Recommended dilutions	Western Blot: 1/500 - 1/2000. Immunohistochemistry: 1/100 - 1/300. Immunofluorescence: 1/200 - 1/1000. ELISA: 1/10000. Not yet tested in other applications.
Immunogen	The antiserum was produced against synthesized peptide derived from human TUSC3. AA range:131-180
Specificity	N33 Polyclonal Antibody detects endogenous levels of N33 protein.
Formulation	Liquid in PBS containing 50% glycerol, 0.5% BSA and 0.02% sodium azide.
Storage	Store at -20°C. Avoid repeated freeze-thaw cycles.
Protein Name	Tumor suppressor candidate 3
Gene Name	TUSC3
Cellular localization	Endoplasmic reticulum membrane ; Multi-pass membrane protein .
Purification	The antibody was affinity-purified from rabbit antiserum by affinity-chromatography using epitope-specific immunogen.
Clonality	Polyclonal
Concentration	1 mg/ml
Observed band	39kD
Human Gene ID	7991
Human Swiss-Prot Number	Q13454
Alternative Names	TUSC3; N33; Tumor suppressor candidate 3; Magnesium uptake/transporter TUSC3; Protein N33
Background	This gene is a candidate tumor suppressor gene. It is located within a homozygously deleted region of a metastatic prostate cancer. The gene is expressed in



most nonlymphoid human tissues including prostate, lung, liver, and colon. Expression was also detected in many epithelial tumor cell lines. Two transcript variants encoding distinct isoforms have been identified for this gene. [provided by RefSeq, Jul 2008],

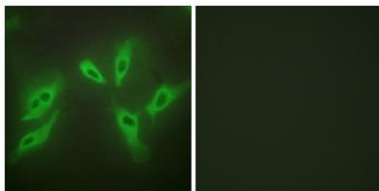


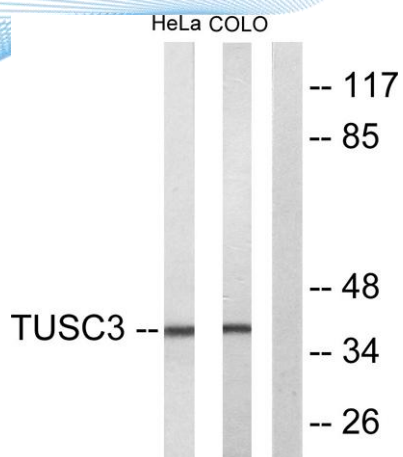
Western Blot analysis of various cells using N33 Polyclonal Antibody



Western Blot analysis of HeLa cells using N33 Polyclonal Antibody

Immunofluorescence analysis of HeLa cells using TUSC3 Antibody. The picture on the right is blocked with the synthesized peptide.





Western blot analysis of lysates from COLO205 and HeLa cells, using TUSC3 Antibody. The lane on the right is blocked with the synthesized peptide.

