

MRP-L11 rabbit pAb

Cat No.:ES2827

For research use only

Overview

Product Name	MRP-L11 rabbit pAb
Host species	Rabbit
Applications	WB;IHC;IF;ELISA
Species Cross-Reactivity	Human;Monkey
Recommended dilutions	Western Blot: 1/500 - 1/2000. Immunohistochemistry: 1/100 - 1/300. Immunofluorescence: 1/200 - 1/1000. ELISA: 1/40000. Not yet tested in other applications.
Immunogen	The antiserum was produced against synthesized peptide derived from human MRPL11. AA range:21-70
Specificity	MRP-L11 Polyclonal Antibody detects endogenous levels of MRP-L11 protein.
Formulation	Liquid in PBS containing 50% glycerol, 0.5% BSA and 0.02% sodium azide.
Storage	Store at -20°C. Avoid repeated freeze-thaw cycles.
Protein Name	39S ribosomal protein L11 mitochondrial
Gene Name	MRPL11
Cellular localization	Mitochondrion .
Purification	The antibody was affinity-purified from rabbit antiserum by affinity-chromatography using epitope-specific immunogen.
Clonality	Polyclonal
Concentration	1 mg/ml
Observed band	21kD
Human Gene ID	65003
Human Swiss-Prot Number	Q9Y3B7
Alternative Names	MRPL11; CGI-113; 39S ribosomal protein L11; mitochondrial; L11mt; MRP-L11
Background	This nuclear gene encodes a 39S subunit component of the mitochondrial ribosome. Alternative splicing results in multiple transcript variants. Pseudogenes for this gene are found on chromosomes 5 and 12.

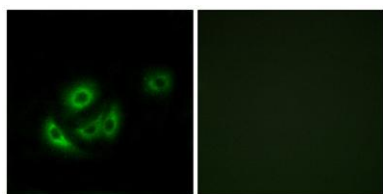


[provided by RefSeq, May 2014],

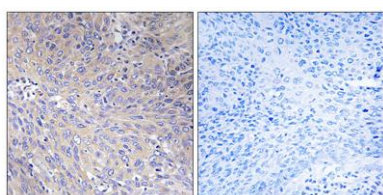


Western Blot analysis of various cells using MRP-L11
Polyclonal Antibody diluted at 1:500

Immunofluorescence analysis of A549 cells, using MRPL11
Antibody. The picture on the right is blocked with the
synthesized peptide.

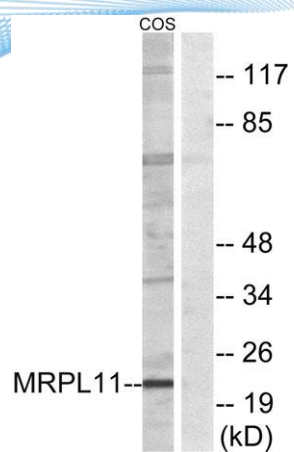


Immunohistochemistry analysis of paraffin-embedded
human cervix carcinoma tissue, using MRPL11 Antibody.
The picture on the right is blocked with the synthesized
peptide.





ELK Biotechnology



Western blot analysis of lysates from COS cells, using MRPL11 Antibody. The lane on the right is blocked with the synthesized peptide.



+86-27-59760950

ELKbio@ELKbiotech.com

www.elkbiotech.com

23-2, No.388 Gaoxin 2nd Road,Wuhan East Lake Hi-tech Development Zone, Hubei , P.R.C