



# mGluR-7 rabbit pAb

Cat No.:ES2787

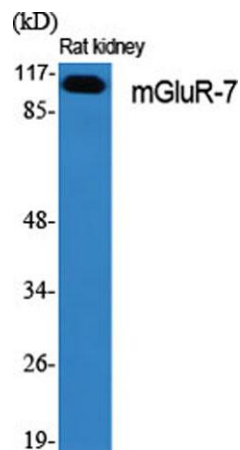
For research use only

## Overview

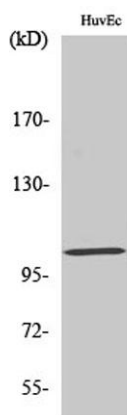
Product Name	mGluR-7 rabbit pAb
Host species	Rabbit
Applications	WB;IHC;IF;ELISA
Species Cross-Reactivity	Human;Mouse;Rat
Recommended dilutions	Western Blot: 1/500 - 1/2000. Immunohistochemistry: 1/100 - 1/300. Immunofluorescence: 1/200 - 1/1000. ELISA: 1/20000. Not yet tested in other applications.
Immunogen	The antiserum was produced against synthesized peptide derived from human mGluR7. AA range:866-915
Specificity	mGluR-7 Polyclonal Antibody detects endogenous levels of mGluR-7 protein.
Formulation	Liquid in PBS containing 50% glycerol, 0.5% BSA and 0.02% sodium azide.
Storage	Store at -20°C. Avoid repeated freeze-thaw cycles.
Protein Name	Metabotropic glutamate receptor 7
Gene Name	GRM7
Cellular localization	Cell membrane ; Multi-pass membrane protein .
Purification	The antibody was affinity-purified from rabbit antiserum by affinity-chromatography using epitope-specific immunogen.
Clonality	Polyclonal
Concentration	1 mg/ml
Observed band	100kD
Human Gene ID	2917
Human Swiss-Prot Number	Q14831
Alternative Names	GRM7; GPRC1G; MGLUR7; Metabotropic glutamate receptor 7; mGluR7
Background	glutamate metabotropic receptor 7(GRM7) Homo sapiens L-glutamate is the major excitatory neurotransmitter in the central nervous system, and it activates both ionotropic and metabotropic



glutamate receptors. Glutamatergic neurotransmission is involved in most aspects of normal brain function and can be perturbed in many neuropathologic conditions. The metabotropic glutamate receptors are a family of G protein-coupled receptors that have been divided into three groups on the basis of sequence homology, putative signal transduction mechanisms, and pharmacologic properties. Group I includes GRM1 and GRM5, and these receptors have been shown to activate phospholipase C. Group II includes GRM2 and GRM3, while Group III includes GRM4, GRM6, GRM7 and GRM8. Group II and III receptors are linked to the inhibition of the cyclic AMP cascade but differ in their agonist selectivities. Multiple transcript variants encoding different isoforms have been found



Western Blot analysis of various cells using mGluR-7 Polyclonal Antibody



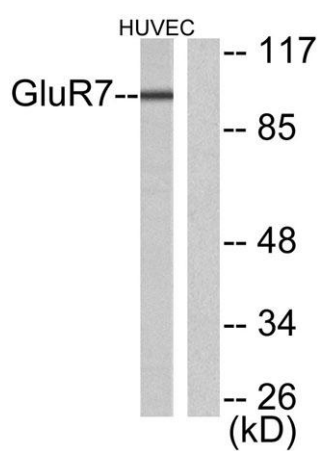
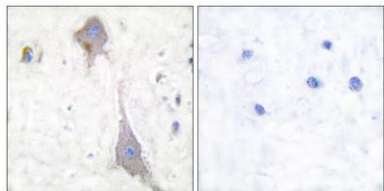
Western Blot analysis of HuvEc cells using mGluR-7 Polyclonal Antibody





**ELK Biotechnology**

Immunohistochemistry analysis of paraffin-embedded human brain tissue, using mGluR7 Antibody. The picture on the right is blocked with the synthesized peptide.



Western blot analysis of lysates from HUVEC cells, using mGluR7 Antibody. The lane on the right is blocked with the synthesized peptide.



+86-27-59760950

ELKbio@ELKbiotech.com

[www.elkbiotech.com](http://www.elkbiotech.com)

23-2, No.388 Gaoxin 2nd Road,Wuhan East Lake Hi-tech Development Zone, Hubei , P.R.C