

LOK rabbit pAb

Cat No.:ES2721

For research use only

Overview

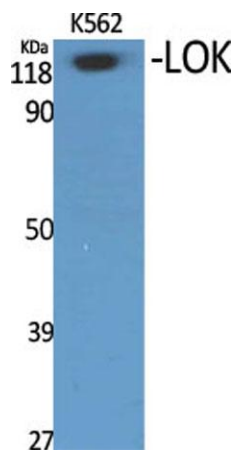
Product Name	LOK rabbit pAb
Host species	Rabbit
Applications	WB;ELISA;IHC
Species Cross-Reactivity	Human;Rat;Mouse;
Recommended dilutions	WB 1:500-2000;IHC-p 1:50-300; ELISA 2000-20000
Immunogen	The antiserum was produced against synthesized peptide derived from human STK10. AA range:491-540
Specificity	LOK Polyclonal Antibody detects endogenous levels of LOK protein.
Formulation	Liquid in PBS containing 50% glycerol, 0.5% BSA and 0.02% sodium azide.
Storage	Store at -20°C. Avoid repeated freeze-thaw cycles.
Protein Name	Serine/threonine-protein kinase 10
Gene Name	STK10
Cellular localization	Cell membrane ; Peripheral membrane protein .
Purification	The antibody was affinity-purified from rabbit antiserum by affinity-chromatography using epitope-specific immunogen.
Clonality	Polyclonal
Concentration	1 mg/ml
Observed band	120kD
Human Gene ID	6793
Human Swiss-Prot Number	O94804
Alternative Names	STK10; LOK; Serine/threonine-protein kinase 10; Lymphocyte-oriented kinase
Background	This gene encodes a member of the Ste20 family of serine/threonine protein kinases, and is similar to several known polo-like kinase kinases. The protein can associate with and phosphorylate polo-like kinase 1, and overexpression of a kinase-dead version of the protein interferes with normal cell cycle progression. The kinase can also negatively



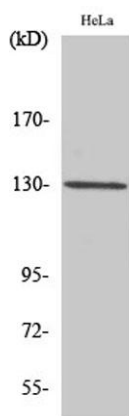


ELK Biotechnology

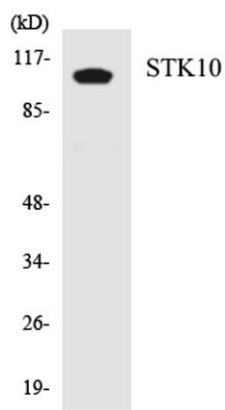
regulate interleukin 2 expression in T-cells via the mitogen activated protein kinase kinase 1 pathway. [provided by RefSeq, Jul 2008],



Western Blot analysis of various cells using LOK Polyclonal Antibody



Western Blot analysis of HuvEc cells using LOK Polyclonal Antibody



Western blot analysis of the lysates from HT-29 cells using STK10 antibody.



+86-27-59760950

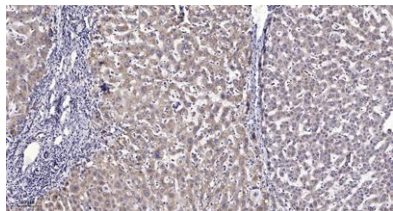
ELKbio@ELKbiotech.com

www.elkbiotech.com

23-2, No.388 Gaoxin 2nd Road, Wuhan East Lake Hi-tech Development Zone, Hubei, P.R.C.



ELK Biotechnology



Immunohistochemical analysis of paraffin-embedded human liver cancer. 1, Antibody was diluted at 1:200(4° overnight). 2, Tris-EDTA,pH9.0 was used for antigen retrieval. 3,Secondary antibody was diluted at 1:200(room temperature, 45min).



+86-27-59760950

ELKbio@ELKbiotech.com

www.elkbiotech.com

23-2, No.388 Gaoxin 2nd Road,Wuhan East Lake Hi-tech Development Zone, Hubei , P.R.C