

Kanadaptin rabbit pAb

Cat No.:ES2667

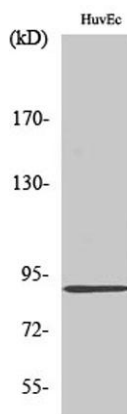
For research use only

Overview

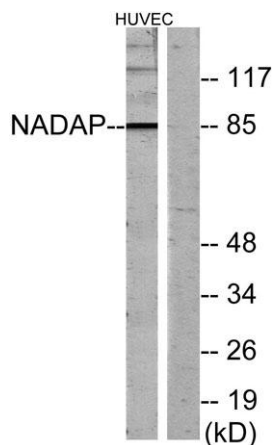
Product Name	Kanadaptin rabbit pAb
Host species	Rabbit
Applications	WB;IHC;IF;ELISA
Species Cross-Reactivity	Human;Mouse
Recommended dilutions	Western Blot: 1/500 - 1/2000. Immunohistochemistry: 1/100 - 1/300. Immunofluorescence: 1/200 - 1/1000. ELISA: 1/10000. Not yet tested in other applications.
Immunogen	The antiserum was produced against synthesized peptide derived from human NADAP. AA range:421-470
Specificity	Kanadaptin Polyclonal Antibody detects endogenous levels of Kanadaptin protein.
Formulation	Liquid in PBS containing 50% glycerol, 0.5% BSA and 0.02% sodium azide.
Storage	Store at -20°C. Avoid repeated freeze-thaw cycles.
Protein Name	Kanadaptin
Gene Name	SLC4A1AP
Cellular localization	Nucleus . Cytoplasm . Mainly nuclear. Small amounts are found in the cytoplasm.
Purification	The antibody was affinity-purified from rabbit antiserum by affinity-chromatography using epitope-specific immunogen.
Clonality	Polyclonal
Concentration	1 mg/ml
Observed band	85kD
Human Gene ID	22950
Human Swiss-Prot Number	Q9BWU0
Alternative Names	SLC4A1AP; HLC3; Kanadaptin; Human lung cancer oncogene 3 protein; HLC-3; Kidney anion exchanger adapter protein; Solute carrier family 4 anion exchanger member 1 adapter protein caution:PubMed:15764369 initially suggested a role
Background	



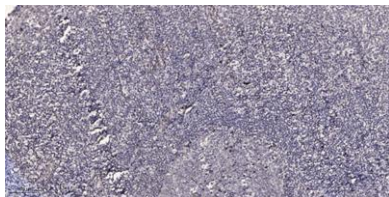
in targeting SLC4A1 (kidney anion exchanger 1) to the plasma membrane; it does not seem to do so as it does not interact with SLC4A1 and has no effect on SLC4A1 trafficking.,online information:Band 3 entry,PTM:Phosphorylated upon DNA damage, probably by ATM or ATR.,similarity:Contains 1 FHA domain.,subcellular location:Mainly nuclear. Small amounts are found in the cytoplasm.,tissue specificity:Ubiquitously expressed.,



Western Blot analysis of various cells using Kanadaplin
Polyclonal Antibody diluted at 1:2000



Western blot analysis of lysates from HUVEC cells, using
NADAP Antibody. The lane on the right is blocked with the
synthesized peptide.



Immunohistochemical analysis of paraffin-embedded
human tonsil. 1, Antibody was diluted at 1:200(4°
overnight). 2, Tris-EDTA,pH9.0 was used for antigen
retrieval. 3,Secondary antibody was diluted at 1:200(room
temperature, 45min).





ELK Biotechnology



+86-27-59760950

ELKbio@ELKbiotech.com

www.elkbiotech.com

23-2, No.388 Gaoxin 2nd Road,Wuhan East Lake Hi-tech Development Zone, Hubei , P.R.C