



# Islet-2 rabbit pAb

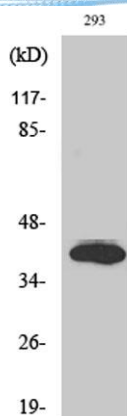
Cat No.:ES2651

For research use only

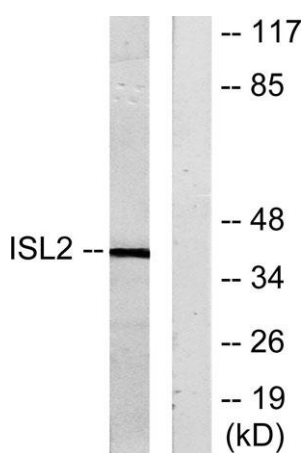
## Overview

<b>Product Name</b>	Islet-2 rabbit pAb
<b>Host species</b>	Rabbit
<b>Applications</b>	WB;IHC
<b>Species Cross-Reactivity</b>	Human;Mouse;Rat
<b>Recommended dilutions</b>	WB 1:500-2000;IHC-p 1:50-300
<b>Immunogen</b>	The antiserum was produced against synthesized peptide derived from human ISL2. AA range:161-210
<b>Specificity</b>	Islet-2 Polyclonal Antibody detects endogenous levels of Islet-2 protein.
<b>Formulation</b>	Liquid in PBS containing 50% glycerol, 0.5% BSA and 0.02% sodium azide.
<b>Storage</b>	Store at -20°C. Avoid repeated freeze-thaw cycles.
<b>Protein Name</b>	Insulin gene enhancer protein ISL-2
<b>Gene Name</b>	ISL2
<b>Cellular localization</b>	Nucleus .
<b>Purification</b>	The antibody was affinity-purified from rabbit antiserum by affinity-chromatography using epitope-specific immunogen.
<b>Clonality</b>	Polyclonal
<b>Concentration</b>	1 mg/ml
<b>Observed band</b>	40kD
<b>Human Gene ID</b>	64843
<b>Human Swiss-Prot Number</b>	Q96A47
<b>Alternative Names</b>	ISL2; Insulin gene enhancer protein ISL-2; Islet-2
<b>Background</b>	function:Transcriptional factor that defines subclasses of motoneurons that segregate into columns in the spinal cord and select distinct axon pathways.,similarity:Contains 1 homeobox DNA-binding domain.,similarity:Contains 2 LIM zinc-binding domains.,

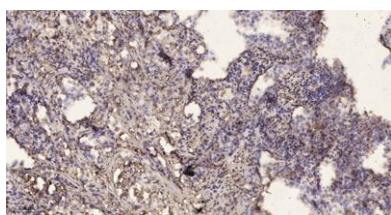




Western Blot analysis of various cells using Islet-2 Polyclonal Antibody diluted at 1:500 cells nucleus extracted by Minute TM Cytoplasmic and Nuclear Fractionation kit (SC-003, Inventbiotech, MN, USA).



Western blot analysis of lysates from 293 cells, using ISL2 Antibody. The lane on the right is blocked with the synthesized peptide.



Immunohistochemical analysis of paraffin-embedded human lung cancer. 1, Antibody was diluted at 1:200(4° overnight). 2, Tris-EDTA, pH9.0 was used for antigen retrieval. 3, Secondary antibody was diluted at 1:200(room temperature, 45min).

