

IQGAP1 rabbit pAb

Cat No.:ES2639

For research use only

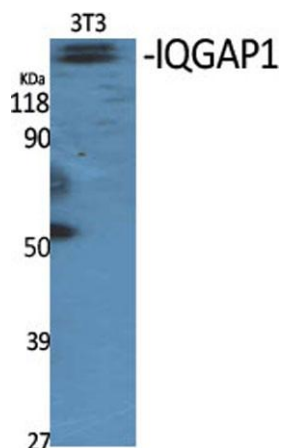
Overview

Product Name	IQGAP1 rabbit pAb
Host species	Rabbit
Applications	WB;IHC
Species Cross-Reactivity	Human;Mouse
Recommended dilutions	WB 1:500-2000;IHC-p 1:50-300
Immunogen	The antiserum was produced against synthesized peptide derived from human IQGAP1. AA range:247-296
Specificity	IQGAP1 Polyclonal Antibody detects endogenous levels of IQGAP1 protein.
Formulation	Liquid in PBS containing 50% glycerol, 0.5% BSA and 0.02% sodium azide.
Storage	Store at -20°C. Avoid repeated freeze-thaw cycles.
Protein Name	Ras GTPase-activating-like protein IQGAP1
Gene Name	IQGAP1
Cellular localization	Cell membrane . Nucleus . Cytoplasm . Subcellular distribution is regulated by the cell cycle, nuclear levels increase at G1/S phase (PubMed:20883816). .
Purification	The antibody was affinity-purified from rabbit antiserum by affinity-chromatography using epitope-specific immunogen.
Clonality	Polyclonal
Concentration	1 mg/ml
Observed band	190kD
Human Gene ID	8826
Human Swiss-Prot Number	P46940
Alternative Names	IQGAP1; KIAA0051; Ras GTPase-activating-like protein IQGAP1; p195
Background	IQ motif containing GTPase activating protein 1(IQGAP1) Homo sapiens This gene encodes a member of the IQGAP family. The protein contains four IQ domains, one calponin homology domain, one Ras-GAP domain and one WW domain. It

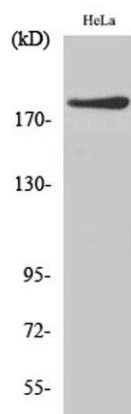




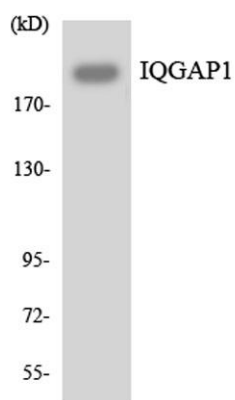
interacts with components of the cytoskeleton, with cell adhesion molecules, and with several signaling molecules to regulate cell morphology and motility. Expression of the protein is upregulated by gene amplification in two gastric cancer cell lines. [provided by RefSeq, Jul 2008],



Western Blot analysis of various cells using IQGAP1
Polyclonal Antibody diluted at 1:1000



Western Blot analysis of HeLa cells using IQGAP1
Polyclonal Antibody diluted at 1:1000

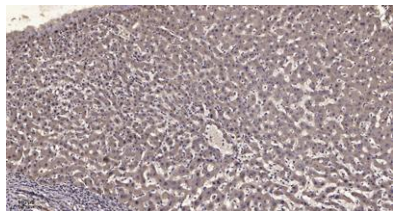


Western blot analysis of the lysates from K562 cells using
IQGAP1 antibody.





ELK Biotechnology



Immunohistochemical analysis of paraffin-embedded human liver cancer. 1, Antibody was diluted at 1:200(4° overnight). 2, Tris-EDTA,pH9.0 was used for antigen retrieval. 3,Secondary antibody was diluted at 1:200(room temperature, 45min).



+86-27-59760950

ELKbio@ELKbiotech.com

www.elkbiotech.com

23-2, No.388 Gaoxin 2nd Road,Wuhan East Lake Hi-tech Development Zone, Hubei , P.R.C