

IgA rabbit pAb

Cat No.:ES2594

For research use only

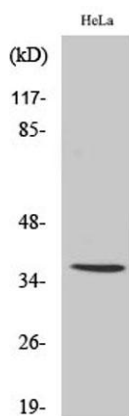
Overview

Product Name	IgA rabbit pAb
Host species	Rabbit
Applications	WB;IHC;IF;ELISA
Species Cross-Reactivity	Human;Rat;Mouse;
Recommended dilutions	Western Blot: 1/500 - 1/2000. Immunohistochemistry: 1/100 - 1/300. ELISA: 1/40000. Not yet tested in other applications.
Immunogen	The antiserum was produced against synthesized peptide derived from human IgA. AA range:227-276
Specificity	IgA Polyclonal Antibody detects endogenous levels of IgA protein.
Formulation	Liquid in PBS containing 50% glycerol, 0.5% BSA and 0.02% sodium azide.
Storage	Store at -20°C. Avoid repeated freeze-thaw cycles.
Protein Name	Ig alpha-1 chain C region/Ig alpha-2 chain C region
Gene Name	IGHA1/IGHA2
Cellular localization	Secreted . Cell membrane .
Purification	The antibody was affinity-purified from rabbit antiserum by affinity-chromatography using epitope-specific immunogen.
Clonality	Polyclonal
Concentration	1 mg/ml
Observed band	38kD
Human Gene ID	3493/3494
Human Swiss-Prot Number	P01876/P01877
Alternative Names	IGHA1; Ig alpha-1 chain C region; IGH A2; Ig alpha-2 chain C region
Background	disease:A chromosomal aberration involving IGH A1 is found in multiple myeloma (MM) cell lines. Translocation t(1;14)(q21;q32) that forms a FCRL4-IGHA1 fusion protein.,function:Ig alpha is the major immunoglobulin class in body secretions. It may serve both to defend against local infection and



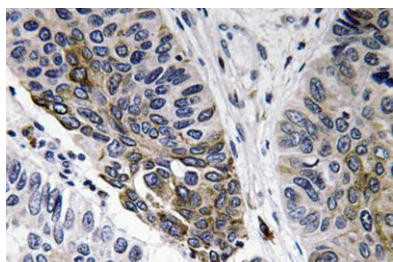


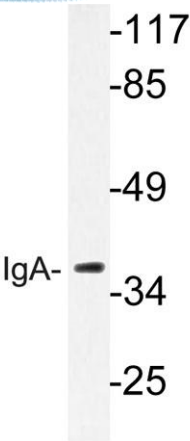
to prevent access of foreign antigens to the general immunologic system.,PTM:3-Hydroxykynurenine, an oxidized tryptophan metabolite that is common in biological fluids, reacts with alpha-1-microglobulin to form heterogeneous polycyclic chromophores including hydroxanthommatin. The chromophore reacts with accessible cysteines forming non-reducible thioether cross-links with Ig alpha-1 chain C region Cys-352.,similarity:Contains 3 Ig-like (immunoglobulin-like) domains.,subunit:Monomeric or polymeric.,



Western Blot analysis of various cells using IgA Polyclonal Antibody

Immunohistochemistry analysis of IgA antibody in paraffin-embedded human lung carcinoma tissue.





Western blot analysis of lysate from HeLa cells, using IgA antibody.

