

Epsin 2 rabbit pAb

Cat No.:ES2285

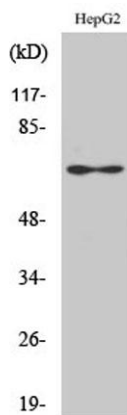
For research use only

Overview

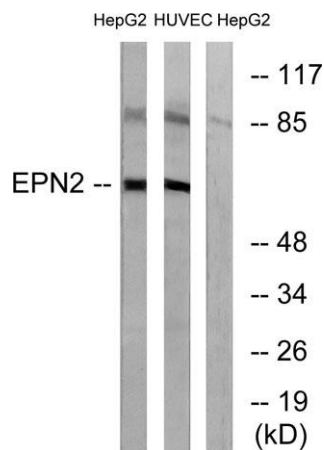
Product Name	Epsin 2 rabbit pAb
Host species	Rabbit
Applications	WB;IHC;IF;ELISA
Species Cross-Reactivity	Human;Mouse;Rat
Recommended dilutions	Western Blot: 1/500 - 1/2000. Immunohistochemistry: 1/100 - 1/300. ELISA: 1/20000. Not yet tested in other applications.
Immunogen	The antiserum was produced against synthesized peptide derived from human EPN2. AA range:271-320
Specificity	Epsin 2 Polyclonal Antibody detects endogenous levels of Epsin 2 protein.
Formulation	Liquid in PBS containing 50% glycerol, 0.5% BSA and 0.02% sodium azide.
Storage	Store at -20°C. Avoid repeated freeze-thaw cycles.
Protein Name	Epsin-2
Gene Name	EPN2
Cellular localization	Cytoplasm . Cytoplasmic vesicle, clathrin-coated vesicle . In punctate structures throughout the cell, associated with clathrin-coated vesicles, and particularly concentrated in the region of the Golgi complex.
Purification	The antibody was affinity-purified from rabbit antiserum by affinity-chromatography using epitope-specific immunogen.
Clonality	Polyclonal
Concentration	1 mg/ml
Observed band	68kD
Human Gene ID	22905
Human Swiss-Prot Number	O95208
Alternative Names	EPN2; KIAA1065; Epsin-2; EPS-15-interacting protein 2
Background	This gene encodes a protein which interacts with



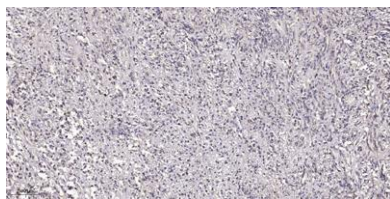
clathrin and adaptor-related protein complex 2, alpha 1 subunit. The protein is found in a brain-derived clathrin-coated vesicle fraction and localizes to the peri-Golgi region and the cell periphery. The protein is thought to be involved in clathrin-mediated endocytosis. Alternate splicing of this gene results in multiple transcript variants encoding different isoforms. [provided by RefSeq, Jul 2008],



Western Blot analysis of various cells using Epsin 2
Polyclonal Antibody diluted at 1:1000



Western blot analysis of lysates from HepG2 and HUVEC
cells, using EPN2 Antibody. The lane on the right is
blocked with the synthesized peptide.



Immunohistochemical analysis of paraffin-embedded
human small intestinal carcinoma tissue. 1,primary
Antibody was diluted at 1:200(4° overnight). 2, Sodium
citrate pH 6.0 was used for antigen
retrieval(>98°C,20min). 3,Secondary antibody was diluted
at 1:2





ELK Biotechnology



+86-27-59760950

ELKbio@ELKbiotech.com

www.elkbiotech.com

23-2, No.388 Gaoxin 2nd Road, Wuhan East Lake Hi-tech Development Zone, Hubei, P.R.C.