



# DRS-1 rabbit pAb

Cat No.:ES2203

For research use only

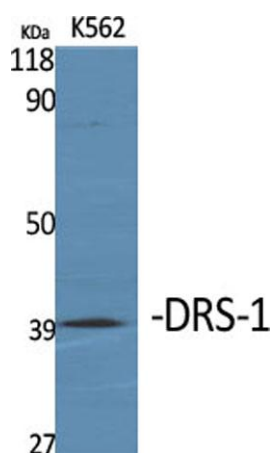
## Overview

Product Name	DRS-1 rabbit pAb
Host species	Rabbit
Applications	WB;IHC;IF;ELISA
Species Cross-Reactivity	Human;Rat;Mouse;
Recommended dilutions	Western Blot: 1/500 - 1/2000. Immunohistochemistry: 1/100 - 1/300. ELISA: 1/20000. Not yet tested in other applications.
Immunogen	The antiserum was produced against synthesized peptide derived from human PECL. AA range:73-122
Specificity	DRS-1 Polyclonal Antibody detects endogenous levels of DRS-1 protein.
Formulation	Liquid in PBS containing 50% glycerol, 0.5% BSA and 0.02% sodium azide.
Storage	Store at -20°C. Avoid repeated freeze-thaw cycles.
Protein Name	Enoyl-CoA delta isomerase 2 mitochondrial
Gene Name	ECI2
Cellular localization	[Isoform 1]: Mitochondrion .; [Isoform 2]: Peroxisome matrix .
Purification	The antibody was affinity-purified from rabbit antiserum by affinity-chromatography using epitope-specific immunogen.
Clonality	Polyclonal
Concentration	1 mg/ml
Observed band	40kD
Human Gene ID	10455
Human Swiss-Prot Number	O75521
Alternative Names	ECI2; DRS1; HCA88; PECL; Enoyl-CoA delta isomerase 2; mitochondrial; DRS-1; Delta(3),delta(2)-enoyl-CoA isomerase; D3,D2-enoyl-CoA isomerase; Diazepam-binding inhibitor-related protein 1; DBI-related protein 1; Dodecenoyl-CoA isomerase; Hep
Background	This gene encodes a member of the

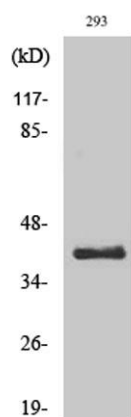




hydratase/isomerase superfamily. The protein encoded is a key mitochondrial enzyme involved in beta-oxidation of unsaturated fatty acids. It catalyzes the transformation of 3-cis and 3-trans-enoyl-CoA esters arising during the stepwise degradation of cis-, mono-, and polyunsaturated fatty acids to the 2-trans-enoyl-CoA intermediates. Alternatively spliced transcript variants have been described. [provided by RefSeq, Aug 2011],

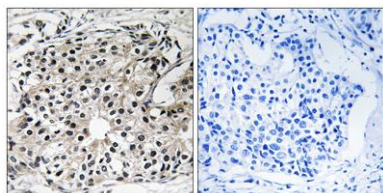


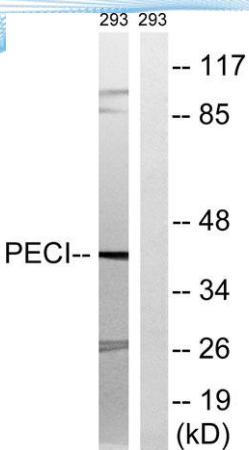
Western Blot analysis of various cells using DRS-1 Polyclonal Antibody



Western Blot analysis of 293 cells using DRS-1 Polyclonal Antibody

Immunohistochemistry analysis of paraffin-embedded human breast carcinoma tissue, using PECl Antibody. The picture on the right is blocked with the synthesized peptide.





Western blot analysis of lysates from 293 cells, using PECI Antibody. The lane on the right is blocked with the synthesized peptide.

