



CUL-2 rabbit pAb

Cat No.:ES2073

For research use only

Overview

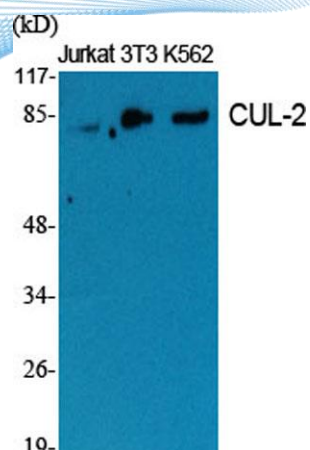
Product Name	CUL-2 rabbit pAb
Host species	Rabbit
Applications	WB;IHC;IF;ELISA
Species Cross-Reactivity	Human;Mouse
Recommended dilutions	Western Blot: 1/500 - 1/2000. Immunohistochemistry: 1/100 - 1/300. Immunofluorescence: 1/200 - 1/1000. ELISA: 1/20000. Not yet tested in other applications.
Immunogen	The antiserum was produced against synthesized peptide derived from human Cullin 2. AA range:696-745
Specificity	CUL-2 Polyclonal Antibody detects endogenous levels of CUL-2 protein.
Formulation	Liquid in PBS containing 50% glycerol, 0.5% BSA and 0.02% sodium azide.
Storage	Store at -20°C. Avoid repeated freeze-thaw cycles.
Protein Name	Cullin-2
Gene Name	CUL2
Cellular localization	nucleoplasm,nucleolus,cytosol,VCB complex,cullin-RING ubiquitin ligase complex,Cul2-RING ubiquitin ligase complex,
Purification	The antibody was affinity-purified from rabbit antiserum by affinity-chromatography using epitope-specific immunogen.
Clonality	Polyclonal
Concentration	1 mg/ml
Observed band	87kD
Human Gene ID	8453
Human Swiss-Prot Number	Q13617
Alternative Names	CUL2; Cullin-2; CUL-2
Background	function:Core component of multiple cullin-RING-based ECS (ElonginB/C-CUL2/5-SOCS-box protein) E3



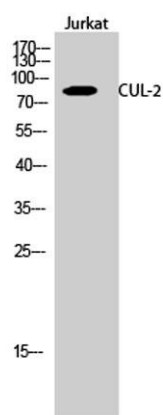


ubiquitin-protein ligase complexes, which mediate the ubiquitination of target proteins. May serve as a rigid scaffold in the complex and may contribute to catalysis through positioning of the substrate and the ubiquitin-conjugating enzyme. The E3 ubiquitin-protein ligase activity of the complex is dependent on the neddylation of the cullin subunit and is inhibited by the association of the deneddylated cullin subunit with TIP120A/CAND1 (By similarity). The functional specificity of the ECS complex depends on the substrate recognition component. ECS(VHL) mediates the ubiquitination of hypoxia-inducible factor (HIF)., pathway: Protein modification; protein ubiquitination., PTM: CBC(VHL) complex formation seems to promote neddylation. Deneddylated via its interaction with the COP9 signalosome (CSN) complex., similarity: Belongs to the cullin family., subunit: Component of multiple ECS (Elongin BC-CUL2/5-SOCS-box protein) E3 ubiquitin-protein ligase complexes formed of CUL2, Elongin BC (TCEB1 and TCEB2), RBX1 and a variable substrate-specific adapter. Component of the ECS(VHL) or CBC(VHL) complex containing VHL. Component of the ECS(MED8) complex with the probable substrate recognition component MED8 (By similarity). Component of the ECS(PPIL5) complex with the probable substrate recognition component PPIL5. Component of a probable ECS E3 ubiquitin-protein ligase complex containing CUL2, RBX1, TCEB1, TCEB2 and FEM1B. Part of an E3 ubiquitin-protein ligase complex including ZYG11B, CUL2 and Elongin BC. Part of an E3 ubiquitin-protein ligase complex including ZYG11BL, CUL2 and Elongin BC. Interacts with RBX1, RNF7, FEM1B and TIP120A/CAND1. Interacts with COPS2, and MED8 (By similarity). Interacts with human respiratory syncytial virus (HRSV) protein NS1.,



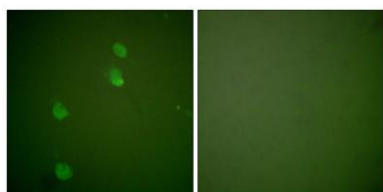


Western Blot analysis of various cells using CUL-2
Polyclonal Antibody diluted at 1:2000



Western Blot analysis of Jurkat cells using CUL-2
Polyclonal Antibody diluted at 1:2000

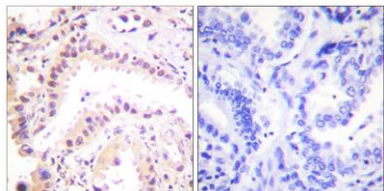
Immunofluorescence analysis of NIH/3T3 cells, using
Cullin 2 Antibody. The picture on the right is blocked with
the synthesized peptide.





ELK Biotechnology

Immunohistochemistry analysis of paraffin-embedded human lung carcinoma tissue, using Cullin 2 Antibody. The picture on the right is blocked with the synthesized peptide.



+86-27-59760950

ELKbio@ELKbiotech.com

www.elkbiotech.com

23-2, No.388 Gaoxin 2nd Road,Wuhan East Lake Hi-tech Development Zone, Hubei , P.R.C