



## c-Maf rabbit pAb

Cat No.:ES2007

For research use only

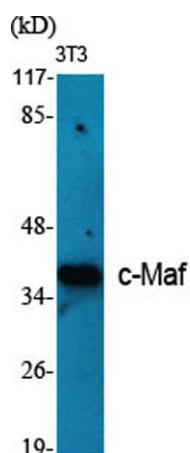
### Overview

Product Name	c-Maf rabbit pAb
Host species	Rabbit
Applications	WB;ELISA
Species Cross-Reactivity	Human;Mouse;Rat
Recommended dilutions	Western Blot: 1/500 - 1/2000. ELISA: 1/10000. Not yet tested in other applications.
Immunogen	The antiserum was produced against synthesized peptide derived from human Maf. AA range:301-350
Specificity	c-Maf Polyclonal Antibody detects endogenous levels of c-Maf protein.
Formulation	Liquid in PBS containing 50% glycerol, 0.5% BSA and 0.02% sodium azide.
Storage	Store at -20°C. Avoid repeated freeze-thaw cycles.
Protein Name	Transcription factor Maf
Gene Name	MAF
Cellular localization	Nucleus .
Purification	The antibody was affinity-purified from rabbit antiserum by affinity-chromatography using epitope-specific immunogen.
Clonality	Polyclonal
Concentration	1 mg/ml
Observed band	41kD
Human Gene ID	4094
Human Swiss-Prot Number	O75444
Alternative Names	MAF; Transcription factor Maf; Proto-oncogene c-Maf; V-maf musculoaponeurotic fibrosarcoma oncogene homolog
Background	<p>The protein encoded by this gene is a DNA-binding, leucine zipper-containing transcription factor that acts as a homodimer or as a heterodimer.</p> <p>Depending on the binding site and binding partner, the encoded protein can be a transcriptional activator or repressor. This protein plays a role in the</p>

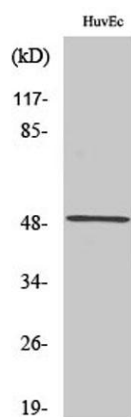




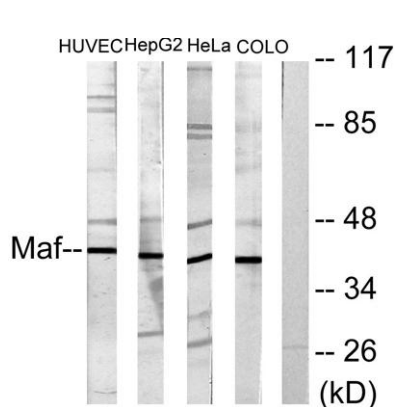
regulation of several cellular processes, including embryonic lens fiber cell development, increased T-cell susceptibility to apoptosis, and chondrocyte terminal differentiation. Defects in this gene are a cause of juvenile-onset pulverulent cataract as well as congenital cerulean cataract 4 (CCA4). Two transcript variants encoding different isoforms have been found for this gene. [provided by RefSeq, Jan 2010],



Western Blot analysis of various cells using c-Maf  
Polyclonal Antibody diluted at 1:500



Western Blot analysis of COLO205 cells using c-Maf  
Polyclonal Antibody diluted at 1:500

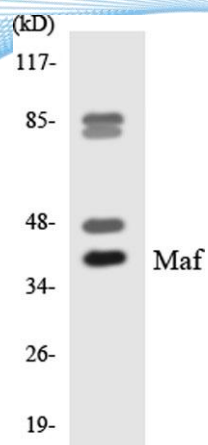


Western blot analysis of lysates from HUVEC, HepG2, HeLa, and COLO205 cells, using Maf Antibody. The lane on the right is blocked with the synthesized peptide.





**ELK Biotechnology**



Western blot analysis of the lysates from HeLa cells using Maf antibody.



+86-27-59760950

[ELKbio@ELKbiotech.com](mailto:ELKbio@ELKbiotech.com)

[www.elkbiotech.com](http://www.elkbiotech.com)

23-2, No.388 Gaoxin 2nd Road,Wuhan East Lake Hi-tech Development Zone, Hubei , P.R.C