

ChoKB rabbit pAb

Cat No.:ES1976

For research use only

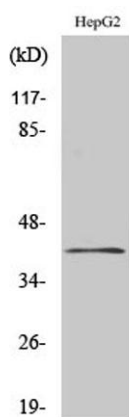
Overview

Product Name	ChoKB rabbit pAb
Host species	Rabbit
Applications	WB;IHC;IF;ELISA
Species Cross-Reactivity	Human;Rat;Mouse;
Recommended dilutions	Western Blot: 1/500 - 1/2000. Immunohistochemistry: 1/100 - 1/300. ELISA: 1/20000. Not yet tested in other applications.
Immunogen	The antiserum was produced against synthesized peptide derived from human CHKB. AA range:301-350
Specificity	ChoKB Polyclonal Antibody detects endogenous levels of ChoKB protein.
Formulation	Liquid in PBS containing 50% glycerol, 0.5% BSA and 0.02% sodium azide.
Storage	Store at -20°C. Avoid repeated freeze-thaw cycles.
Protein Name	Choline/ethanolamine kinase
Gene Name	CHKB
Cellular localization	cytosol,
Purification	The antibody was affinity-purified from rabbit antiserum by affinity-chromatography using epitope-specific immunogen.
Clonality	Polyclonal
Concentration	1 mg/ml
Observed band	45kD
Human Gene ID	1120
Human Swiss-Prot Number	Q9Y259
Alternative Names	CHKB; CHETK; CHKL; Choline/ethanolamine kinase; Choline kinase beta; CK; CKB; Choline kinase-like protein; Ethanolamine kinase; EK; Ethanolamine kinase beta; EKB; choline/ethanolamine kinase beta; CKEKB
Background	Choline kinase (CK) and ethanolamine kinase (EK) catalyze the phosphorylation of

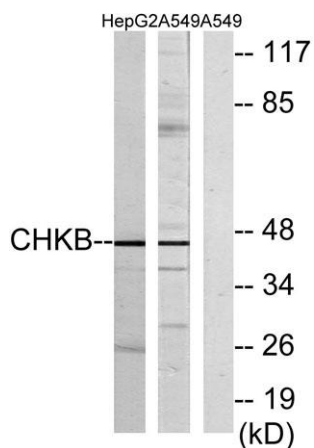




choline/ethanolamine to phosphocholine/phosphoethanolamine. This is the first enzyme in the biosynthesis of phosphatidylcholine/phosphatidylethanolamine in all animal cells. The highly purified CKs from mammalian sources and their recombinant gene products have been shown to have EK activity also, indicating that both activities reside on the same protein. The choline kinase-like protein encoded by CHKL belongs to the choline/ethanolamine kinase family; however, its exact function is not known. Read-through transcripts are expressed from this locus that include exons from the downstream CPT1B locus. [provided by RefSeq, Jun 2009],



Western Blot analysis of various cells using ChoKB Polyclonal Antibody

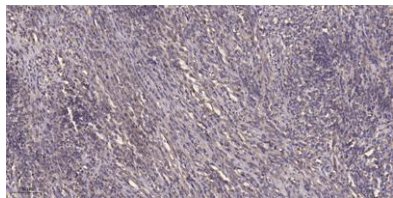


Western blot analysis of lysates from HepG2 and A549 cells, using CHKB Antibody. The lane on the right is blocked with the synthesized peptide.





ELK Biotechnology



Immunohistochemical analysis of paraffin-embedded human Colon cancer. 1, Antibody was diluted at 1:200(4° overnight). 2, Tris-EDTA,pH9.0 was used for antigen retrieval. 3,Secondary antibody was diluted at 1:200(room temperature, 45min).



+86-27-59760950

ELKbio@ELKbiotech.com

www.elkbiotech.com

23-2, No.388 Gaoxin 2nd Road,Wuhan East Lake Hi-tech Development Zone, Hubei , P.R.C