



CDYL2 rabbit pAb

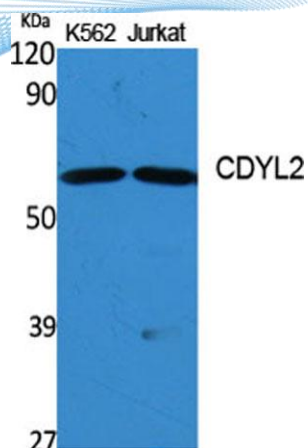
Cat No.:ES1947

For research use only

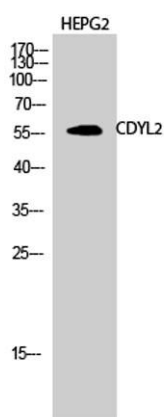
Overview

Product Name	CDYL2 rabbit pAb
Host species	Rabbit
Applications	WB;IHC;IF;ICC;ELISA
Species Cross-Reactivity	Human;Rat;Mouse;
Recommended dilutions	Western Blot: 1/500 - 1/2000. Immunohistochemistry: 1/100 - 1/300. Immunocytochemistry: 1/200 - 1/1000. ELISA: 1/20000. Not yet tested in other applications.
Immunogen	The antiserum was produced against synthesized peptide derived from human CDYL2. AA range:31-80
Specificity	CDYL2 Polyclonal Antibody detects endogenous levels of CDYL2 protein.
Formulation	Liquid in PBS containing 50% glycerol, 0.5% BSA and 0.02% sodium azide.
Storage	Store at -20°C. Avoid repeated freeze-thaw cycles.
Protein Name	Chromodomain Y-like protein 2
Gene Name	CDYL2
Cellular localization	Nucleus .
Purification	The antibody was affinity-purified from rabbit antiserum by affinity-chromatography using epitope-specific immunogen.
Clonality	Polyclonal
Concentration	1 mg/ml
Observed band	56kD
Human Gene ID	124359
Human Swiss-Prot Number	Q8N8U2
Alternative Names	CDYL2; Chromodomain Y-like protein 2; CDY-like 2
Background	similarity:Contains 1 chromo domain.,tissue specificity:Ubiquitously expressed.,





Western Blot analysis of various cells using CDYL2 Polyclonal Antibody diluted at 1:1000 cells nucleus extracted by Minute TM Cytoplasmic and Nuclear Fractionation kit (SC-003, Inventbiotech, MN, USA).



Western Blot analysis of HEPG2 cells using CDYL2 Polyclonal Antibody diluted at 1:1000 cells nucleus extracted by Minute TM Cytoplasmic and Nuclear Fractionation kit (SC-003, Inventbiotech, MN, USA).

Immunohistochemistry analysis of paraffin-embedded human breast carcinoma, using CDYL2 Antibody. The picture on the right is blocked with the synthesized peptide.

