



# CDC46 rabbit pAb

Cat No.:ES1933

For research use only

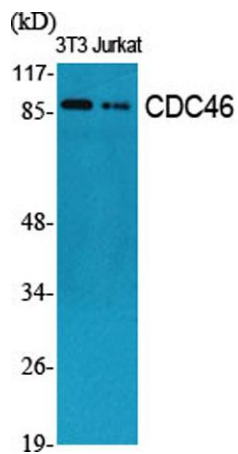
## Overview

<b>Product Name</b>	CDC46 rabbit pAb
<b>Host species</b>	Rabbit
<b>Applications</b>	WB;IHC;IF;ELISA
<b>Species Cross-Reactivity</b>	Human;Mouse;Rat
<b>Recommended dilutions</b>	Western Blot: 1/500 - 1/2000. Immunohistochemistry: 1/100 - 1/300. Immunofluorescence: 1/200 - 1/1000. ELISA: 1/20000. Not yet tested in other applications.
<b>Immunogen</b>	The antiserum was produced against synthesized peptide derived from human MCM5. AA range:21-70
<b>Specificity</b>	CDC46 Polyclonal Antibody detects endogenous levels of CDC46 protein.
<b>Formulation</b>	Liquid in PBS containing 50% glycerol, 0.5% BSA and 0.02% sodium azide.
<b>Storage</b>	Store at -20°C. Avoid repeated freeze-thaw cycles.
<b>Protein Name</b>	DNA replication licensing factor MCM5
<b>Gene Name</b>	MCM5
<b>Cellular localization</b>	Nucleus . Chromosome . Cytoplasm, cytosol . Associated with chromatin before the formation of nuclei and detaches from it as DNA replication progresses. .
<b>Purification</b>	The antibody was affinity-purified from rabbit antiserum by affinity-chromatography using epitope-specific immunogen.
<b>Clonality</b>	Polyclonal
<b>Concentration</b>	1 mg/ml
<b>Observed band</b>	90kD
<b>Human Gene ID</b>	4174
<b>Human Swiss-Prot Number</b>	P33992
<b>Alternative Names</b>	MCM5; CDC46; DNA replication licensing factor MCM5; CDC46 homolog; P1-CDC46
<b>Background</b>	The protein encoded by this gene is structurally very

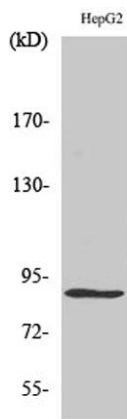




similar to the CDC46 protein from *S. cerevisiae*, a protein involved in the initiation of DNA replication. The encoded protein is a member of the MCM family of chromatin-binding proteins and can interact with at least two other members of this family. The encoded protein is upregulated in the transition from the G0 to G1/S phase of the cell cycle and may actively participate in cell cycle regulation. [provided by RefSeq, Jul 2008],

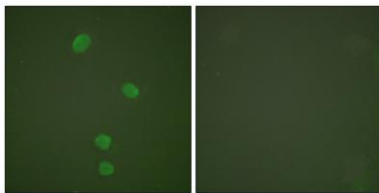


Western Blot analysis of various cells using CDC46 Polyclonal Antibody cells nucleus extracted by Minute TM Cytoplasmic and Nuclear Fractionation kit (SC-003, Inventbiotech, MN, USA).



Western Blot analysis of HepG2 cells using CDC46 Polyclonal Antibody cells nucleus extracted by Minute TM Cytoplasmic and Nuclear Fractionation kit (SC-003, Inventbiotech, MN, USA).

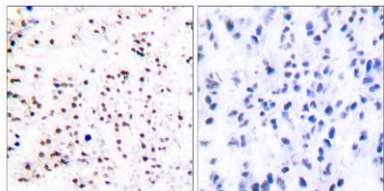
Immunofluorescence analysis of HepG2 cells, using MCM5 Antibody. The picture on the right is blocked with the synthesized peptide.





**ELK Biotechnology**

Immunohistochemistry analysis of paraffin-embedded human tonsil tissue, using MCM5 Antibody. The picture on the right is blocked with the synthesized peptide.



+86-27-59760950

[ELKbio@ELKbiotech.com](mailto:ELKbio@ELKbiotech.com)

[www.elkbiotech.com](http://www.elkbiotech.com)

23-2, No.388 Gaoxin 2nd Road, Wuhan East Lake Hi-tech Development Zone, Hubei, P.R.C