

# Calmodulin rabbit pAb

Cat No.:ES1829

For research use only

## Overview

Product Name	Calmodulin rabbit pAb
Host species	Rabbit
Applications	WB;IHC;IF;ELISA
Species	Human;Mouse;Rat
Cross-Reactivity	
Recommended dilutions	Western Blot: 1/500 - 1/2000. Immunohistochemistry: 1/100 - 1/300. Immunofluorescence: 1/200 - 1/1000. ELISA: 1/10000. Not yet tested in other applications.
Immunogen	The antiserum was produced against synthesized peptide derived from human Calmodulin. AA range:46-95
Specificity	Calmodulin Polyclonal Antibody detects endogenous levels of Calmodulin protein.
Formulation	Liquid in PBS containing 50% glycerol, 0.5% BSA and 0.02% sodium azide.
Storage	Store at -20°C. Avoid repeated freeze-thaw cycles.
Protein Name	Calmodulin
Gene Name	CALM1
Cellular localization	spindle pole,extracellular region,nucleus,nucleoplasm,cytoplasm,centrosome,cytosol,spindle microtubule,plasma membrane,voltage-gated potassium channel complex,sarcomere,growth cone,vesicle,calcium channel complex,G
Purification	The antibody was affinity-purified from rabbit antiserum by affinity-chromatography using epitope-specific immunogen.
Clonality	Polyclonal
Concentration	1 mg/ml
Observed band	
Human Gene ID	801/805/808
Human	P62158
Swiss-Prot Number	
Alternative	CALM1; CALM; CAM; CAM1; CALM2; CAM2; CAMB; CALM3;

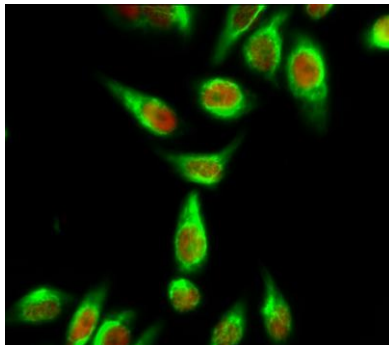


**Names**

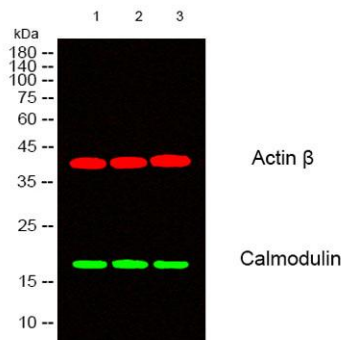
CALML2; CAM3; CAMC; CAMIII; Calmodulin; CaM

**Background**

This gene encodes a member of the EF-hand calcium-binding protein family. It is one of three genes which encode an identical calcium binding protein which is one of the four subunits of phosphorylase kinase. Two pseudogenes have been identified on chromosome 7 and X. Multiple transcript variants encoding different isoforms have been found for this gene.[provided by RefSeq, Oct 2009],

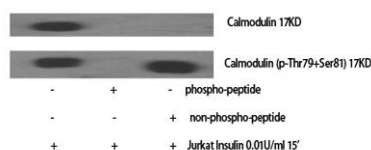


Immunofluorescence analysis of HeLa cell. 1, Calmodulin Polyclonal Antibody (green) was diluted at 1:200 (4° overnight). (red) was diluted at 1:200 (4° overnight). 2, Goat Anti Rabbit Alexa Fluor 488 Catalog: RS3211 was diluted at 1:1000 (room temperature, 50mi



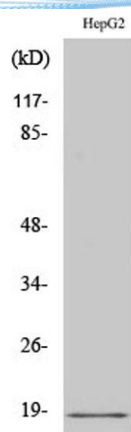
Western blot analysis of lysates from 1) HuvEc, 2) HepG2, 3) 293 cells, (Green) primary antibody was diluted at 1:1000, 4° overnight, secondary antibody (cat: RS23920) was diluted at 1:10000, 37° 1 hour. (Red) Actin β Monoclonal Antibody (5B7) (cat: YM3028) antibody was diluted at 1:5000 as loading control, 4° overnight, secondary antibody (cat: RS23710) was diluted at 1:10000, 37° 1 hour.

Western Blot analysis of various cells using Calmodulin Polyclonal Antibody diluted at 1:2000





**ELK Biotechnology**



Western Blot analysis of HuvEc cells using Calmodulin  
Polyclonal Antibody diluted at 1:2000



+86-27-59760950

[ELKbio@ELKbiotech.com](mailto:ELKbio@ELKbiotech.com)

[www.elkbiotech.com](http://www.elkbiotech.com)

23-2, No.388 Gaoxin 2nd Road,Wuhan East Lake Hi-tech Development Zone, Hubei , P.R.C