

# Cadherin-19 rabbit pAb

Cat No.:ES1824

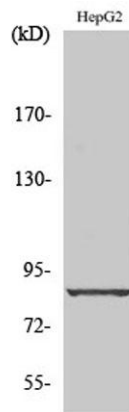
For research use only

## Overview

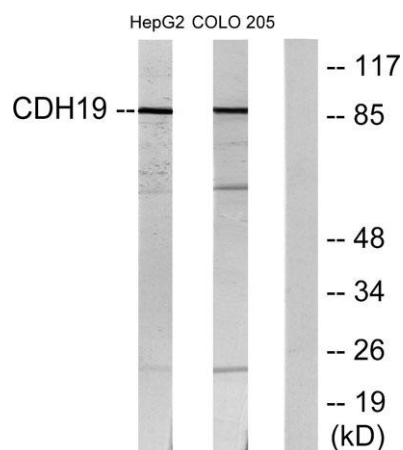
Product Name	Cadherin-19 rabbit pAb
Host species	Rabbit
Applications	WB;IHC;IF;ELISA
Species Cross-Reactivity	Human;Rat;Mouse;
Recommended dilutions	Western Blot: 1/500 - 1/2000. Immunohistochemistry: 1/100 - 1/300. Immunofluorescence: 1/200 - 1/1000. ELISA: 1/20000. Not yet tested in other applications.
Immunogen	The antiserum was produced against synthesized peptide derived from human CDH19. AA range:371-420
Specificity	Cadherin-19 Polyclonal Antibody detects endogenous levels of Cadherin-19 protein.
Formulation	Liquid in PBS containing 50% glycerol, 0.5% BSA and 0.02% sodium azide.
Storage	Store at -20°C. Avoid repeated freeze-thaw cycles.
Protein Name	Cadherin-19
Gene Name	CDH19
Cellular localization	Cell membrane; Single-pass type I membrane protein.
Purification	The antibody was affinity-purified from rabbit antiserum by affinity-chromatography using epitope-specific immunogen.
Clonality	Polyclonal
Concentration	1 mg/ml
Observed band	87kD
Human Gene ID	28513
Human Swiss-Prot Number	Q9H159
Alternative Names	CDH19; CDH7L2; Cadherin-19
Background	This gene is one of three related type II cadherin genes situated in a cluster on chromosome 18. The encoded protein is a calcium dependent cell-cell adhesion glycoprotein containing five extracellular



cadherin repeats. Loss of cadherins may be associated with cancer formation. Alternative splicing results in multiple transcript variants for this gene. [provided by RefSeq, Aug 2012],



Western Blot analysis of various cells using Cadherin-19 Polyclonal Antibody diluted at 1:1000



Western blot analysis of lysates from HepG2 and COLO205 cells, using CDH19 Antibody. The lane on the right is blocked with the synthesized peptide.

