

C9 rabbit pAb

Cat No.:ES1811

For research use only

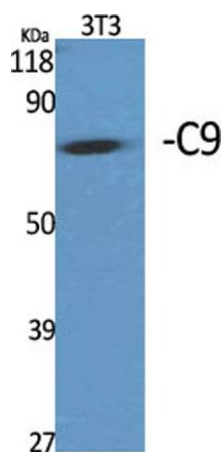
Overview

Product Name	C9 rabbit pAb
Host species	Rabbit
Applications	WB;ELISA
Species Cross-Reactivity	Human;Rat;Mouse;
Recommended dilutions	Western Blot: 1/500 - 1/2000. ELISA: 1/40000. Not yet tested in other applications.
Immunogen	The antiserum was produced against synthesized peptide derived from human C9. AA range:181-230
Specificity	C9 Polyclonal Antibody detects endogenous levels of C9 protein.
Formulation	Liquid in PBS containing 50% glycerol, 0.5% BSA and 0.02% sodium azide.
Storage	Store at -20°C. Avoid repeated freeze-thaw cycles.
Protein Name	Complement component C9
Gene Name	C9
Cellular localization	Secreted . Target cell membrane ; Multi-pass membrane protein . Secreted as soluble monomer. Oligomerizes at target membranes, forming a pre-pore. A conformation change then leads to the formation of a 100 Angstrom diameter pore. .
Purification	The antibody was affinity-purified from rabbit antiserum by affinity-chromatography using epitope-specific immunogen.
Clonality	Polyclonal
Concentration	1 mg/ml
Observed band	70kD
Human Gene ID	735
Human Swiss-Prot Number	P02748
Alternative Names	C9; Complement component C9
Background	This gene encodes the final component of the complement system. It participates in the formation of the Membrane Attack Complex (MAC). The MAC assembles on bacterial membranes to form a pore,

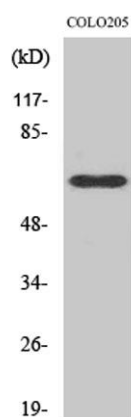




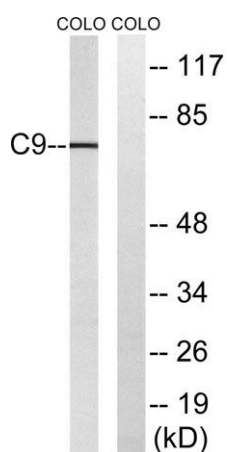
permitting disruption of bacterial membrane organization. Mutations in this gene cause component C9 deficiency. [provided by RefSeq, Feb 2009],



Western Blot analysis of various cells using C9 Polyclonal Antibody



Western Blot analysis of COLO205 cells using C9 Polyclonal Antibody



Western blot analysis of lysates from COLO cells, using C9 Antibody. The lane on the right is blocked with the synthesized peptide.

