

# C1INH rabbit pAb

Cat No.:ES1806

For research use only

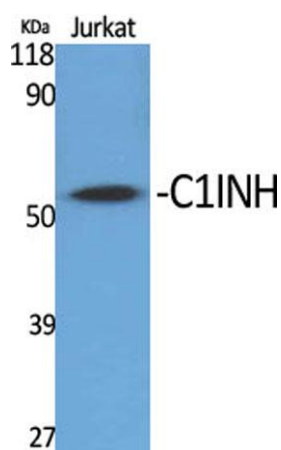
## Overview

Product Name	C1INH rabbit pAb
Host species	Rabbit
Applications	WB;IHC;IF;ELISA
Species Cross-Reactivity	Human;Rat;Mouse;
Recommended dilutions	Western Blot: 1/500 - 1/2000. Immunohistochemistry: 1/100 - 1/300. ELISA: 1/40000. Not yet tested in other applications.
Immunogen	The antiserum was produced against synthesized peptide derived from human SERPING1. AA range:342-391
Specificity	C1INH Polyclonal Antibody detects endogenous levels of C1INH protein.
Formulation	Liquid in PBS containing 50% glycerol, 0.5% BSA and 0.02% sodium azide.
Storage	Store at -20°C. Avoid repeated freeze-thaw cycles.
Protein Name	Plasma protease C1 inhibitor
Gene Name	SERPING1
Cellular localization	Secreted.
Purification	The antibody was affinity-purified from rabbit antiserum by affinity-chromatography using epitope-specific immunogen.
Clonality	Polyclonal
Concentration	1 mg/ml
Observed band	55kD
Human Gene ID	710
Human Swiss-Prot Number	P05155
Alternative Names	SERPING1; C1IN; C1NH; Plasma protease C1 inhibitor; C1 Inh; C1Inh; C1 esterase inhibitor; C1-inhibiting factor; Serpin G1
Background	This gene encodes a highly glycosylated plasma protein involved in the regulation of the complement cascade. Its protein inhibits activated C1r and C1s of the first complement component and

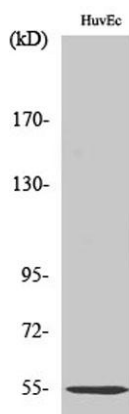




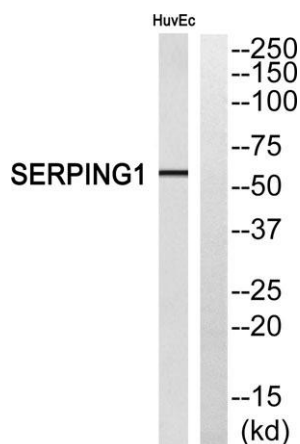
thus regulates complement activation. Deficiency of this protein is associated with hereditary angioneurotic oedema (HANE). Alternative splicing results in multiple transcript variants encoding the same isoform. [provided by RefSeq, Jul 2008],



Western Blot analysis of various cells using C1INH Polyclonal Antibody



Western Blot analysis of HuvEc cells using C1INH Polyclonal Antibody



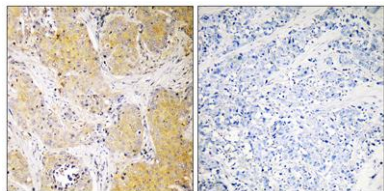
Western blot analysis of SERPING1 Antibody. The lane on the right is blocked with the SERPING1 peptide.





**ELK Biotechnology**

Immunohistochemistry analysis of paraffin-embedded human breast cancer, using SERPING1 Antibody. The picture on the right is blocked with the SERPING1 peptide.



+86-27-59760950

[ELKbio@ELKbiotech.com](mailto:ELKbio@ELKbiotech.com)

[www.elkbiotech.com](http://www.elkbiotech.com)

23-2, No.388 Gaoxin 2nd Road, Wuhan East Lake Hi-tech Development Zone, Hubei, P.R.C.