



C/EBP ϵ rabbit pAb

Cat No.:ES1804

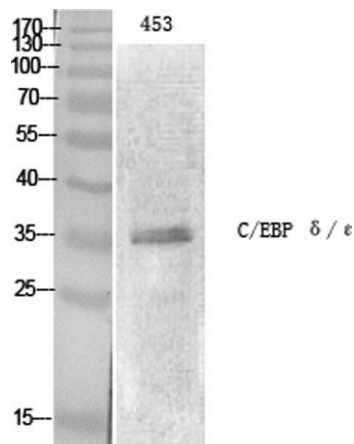
For research use only

Overview

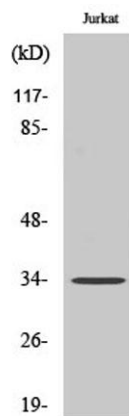
Product Name	C/EBP ϵ rabbit pAb
Host species	Rabbit
Applications	WB;IHC;IF;ELISA
Species Cross-Reactivity	Human;Rat;Mouse;
Recommended dilutions	Western Blot: 1/500 - 1/2000. Immunohistochemistry: 1/100 - 1/300. Immunofluorescence: 1/200 - 1/1000. ELISA: 1/5000. Not yet tested in other applications.
Immunogen	The antiserum was produced against synthesized peptide derived from human C/EBP-epsilon. AA range:40-89
Specificity	C/EBP ϵ Polyclonal Antibody detects endogenous levels of C/EBP ϵ protein.
Formulation	Liquid in PBS containing 50% glycerol, 0.5% BSA and 0.02% sodium azide.
Storage	Store at -20°C. Avoid repeated freeze-thaw cycles.
Protein Name	CCAAT/enhancer-binding protein epsilon
Gene Name	CEBPE
Cellular localization	Nucleus .
Purification	The antibody was affinity-purified from rabbit antiserum by affinity-chromatography using epitope-specific immunogen.
Clonality	Polyclonal
Concentration	1 mg/ml
Observed band	34kD
Human Gene ID	1053
Human Swiss-Prot Number	Q15744
Alternative Names	CEBPE; CCAAT/enhancer-binding protein epsilon; C/EBP epsilon
Background	The protein encoded by this gene is a bZIP transcription factor which can bind as a homodimer to certain DNA regulatory regions. It can also form heterodimers with the related protein CEBP-delta.



The encoded protein may be essential for terminal differentiation and functional maturation of committed granulocyte progenitor cells. Mutations in this gene have been associated with Specific Granule Deficiency, a rare congenital disorder. Multiple variants of this gene have been described, but the full-length nature of only one has been determined. [provided by RefSeq, Jul 2008],

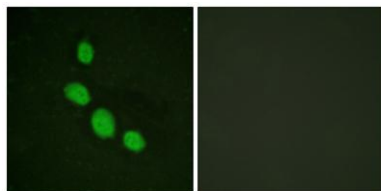


Western Blot analysis of various cells using C/EBP ε Polyclonal Antibody cells nucleus extracted by Minute TM Cytoplasmic and Nuclear Fractionation kit (SC-003, Inventbiotech, MN, USA).



Western Blot analysis of Jurkat cells using C/EBP ε Polyclonal Antibody cells nucleus extracted by Minute TM Cytoplasmic and Nuclear Fractionation kit (SC-003, Inventbiotech, MN, USA).

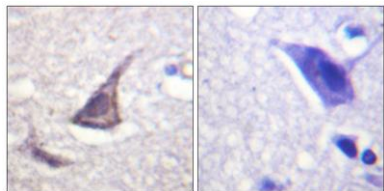
Immunofluorescence analysis of HeLa cells, using C/EBP-epsilon Antibody. The picture on the right is blocked with the synthesized peptide.





ELK Biotechnology

Immunohistochemistry analysis of paraffin-embedded human brain tissue, using C/EBP-epsilon Antibody. The picture on the right is blocked with the synthesized peptide.



+86-27-59760950

ELKbio@ELKbiotech.com

www.elkbiotech.com

23-2, No.388 Gaoxin 2nd Road, Wuhan East Lake Hi-tech Development Zone, Hubei, P.R.C