

ARMCX1 rabbit pAb

Cat No.:ES1704

For research use only

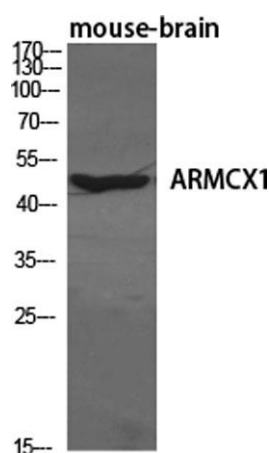
Overview

Product Name	ARMCX1 rabbit pAb
Host species	Rabbit
Applications	WB;IHC;IF;ELISA
Species Cross-Reactivity	Human;Mouse;Rat
Recommended dilutions	Western Blot: 1/500 - 1/2000. Immunohistochemistry: 1/100 - 1/300. Immunofluorescence: 1/200 - 1/1000. ELISA: 1/20000. Not yet tested in other applications.
Immunogen	The antiserum was produced against synthesized peptide derived from human ARMX1. AA range:1-50
Specificity	ARMCX1 Polyclonal Antibody detects endogenous levels of ARMCX1 protein.
Formulation	Liquid in PBS containing 50% glycerol, 0.5% BSA and 0.02% sodium azide.
Storage	Store at -20°C. Avoid repeated freeze-thaw cycles.
Protein Name	Armadillo repeat-containing X-linked protein 1
Gene Name	ARMCX1
Cellular localization	Mitochondrion . Mitochondrion outer membrane ; Single-pass membrane protein .
Purification	The antibody was affinity-purified from rabbit antiserum by affinity-chromatography using epitope-specific immunogen.
Clonality	Polyclonal
Concentration	1 mg/ml
Observed band	49kD
Human Gene ID	51309
Human Swiss-Prot Number	Q9P291
Alternative Names	ARMCX1; ALEX1; AD032; Armadillo repeat-containing X-linked protein 1; ARM protein lost in epithelial cancers on chromosome X 1; Protein ALEX1
Background	armadillo repeat containing, X-linked 1(ARMCX1) Homo sapiens This gene encodes a member of

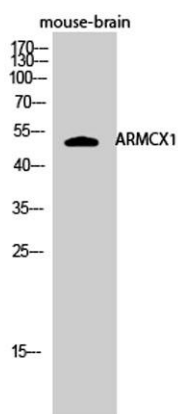




the ALEX family of proteins and may play a role in tumor suppression. The encoded protein contains a potential N-terminal transmembrane domain and two Armadillo (arm) repeats. Other proteins containing the arm repeat are involved in development, maintenance of tissue integrity, and tumorigenesis. This gene is closely localized with other family members, including ALEX2 and ALEX3, on the X chromosome. [provided by RefSeq, Jul 2008],



Western Blot analysis of various cells using ARM CX1
Polyclonal Antibody diluted at 1:1000

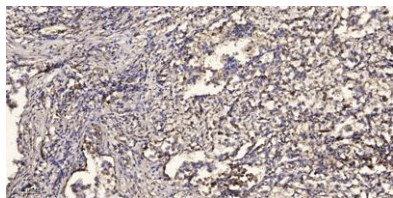
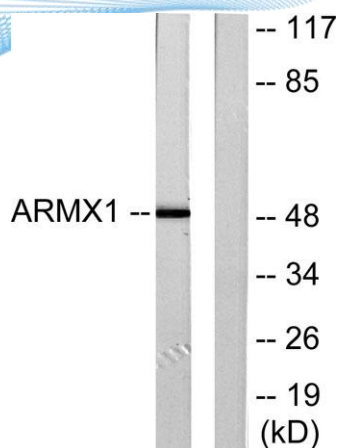


Western Blot analysis of mouse-brain cells using ARM CX1
Polyclonal Antibody diluted at 1:1000





ELK Biotechnology



Immunohistochemical analysis of paraffin-embedded human Squamous cell carcinoma of lung. 1, Antibody was diluted at 1:200(4° overnight). 2, Tris-EDTA,pH9.0 was used for antigen retrieval. 3,Secondary antibody was diluted at 1:200(room temperature, 45min).



+86-27-59760950

ELKbio@ELKbiotech.com

www.elkbiotech.com

23-2, No.388 Gaoxin 2nd Road,Wuhan East Lake Hi-tech Development Zone, Hubei , P.R.C