

ARHGEF10 rabbit pAb

Cat No.:ES1697

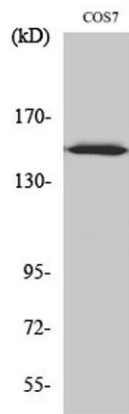
For research use only

Overview

Product Name	ARHGEF10 rabbit pAb
Host species	Rabbit
Applications	WB;IHC;IF;ELISA
Species Cross-Reactivity	Human;Monkey
Recommended dilutions	Western Blot: 1/500 - 1/2000. Immunohistochemistry: 1/100 - 1/300. ELISA: 1/20000. Not yet tested in other applications.
Immunogen	The antiserum was produced against synthesized peptide derived from human ARHGEF10. AA range:339-388
Specificity	ARHGEF10 Polyclonal Antibody detects endogenous levels of ARHGEF10 protein.
Formulation	Liquid in PBS containing 50% glycerol, 0.5% BSA and 0.02% sodium azide.
Storage	Store at -20°C. Avoid repeated freeze-thaw cycles.
Protein Name	Rho guanine nucleotide exchange factor 10
Gene Name	ARHGEF10
Cellular localization	centrosome,cytosol,
Purification	The antibody was affinity-purified from rabbit antiserum by affinity-chromatography using epitope-specific immunogen.
Clonality	Polyclonal
Concentration	1 mg/ml
Observed band	152kD
Human Gene ID	9639
Human Swiss-Prot Number	O15013
Alternative Names	ARHGEF10; KIAA0294; Rho guanine nucleotide exchange factor 10
Background	This gene encodes a Rho guanine nucleotide exchange factor (GEF). Rho GEFs regulate the activity of small Rho GTPases by stimulating the exchange of guanine diphosphate (GDP) for guanine triphosphate (GTP) and may play a role in neural

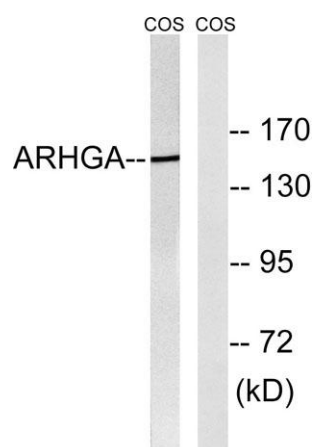
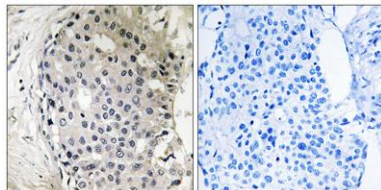


morphogenesis. Mutations in this gene are associated with slowed nerve conduction velocity (SNCV). Alternative splicing results in multiple transcript variants. [provided by RefSeq, Apr 2015],



Western Blot analysis of various cells using ARHGEF10 Polyclonal Antibody

Immunohistochemistry analysis of paraffin-embedded human breast carcinoma tissue, using ARHGEF10 Antibody. The picture on the right is blocked with the synthesized peptide.



Western blot analysis of lysates from COS7 cells, using ARHGEF10 Antibody. The lane on the right is blocked with the synthesized peptide.

