



APC rabbit pAb

Cat No.:ES1674

For research use only

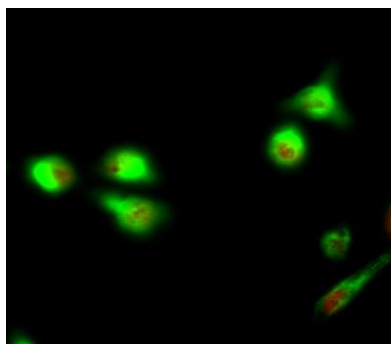
Overview

| | |
|--------------------------|--|
| Product Name | APC rabbit pAb |
| Host species | Rabbit |
| Applications | WB;IHC;IF;ELISA |
| Species Cross-Reactivity | Human;Mouse;Rat |
| Recommended dilutions | Western Blot: 1/500 - 1/2000. Immunohistochemistry: 1/100 - 1/300. Immunofluorescence: 1/200 - 1/1000. ELISA: 1/40000. Not yet tested in other applications. |
| Immunogen | The antiserum was produced against synthesized peptide derived from human APC. AA range:2794-2843 |
| Specificity | APC Polyclonal Antibody detects endogenous levels of APC protein. |
| Formulation | Liquid in PBS containing 50% glycerol, 0.5% BSA and 0.02% sodium azide. |
| Storage | Store at -20°C. Avoid repeated freeze-thaw cycles. |
| Protein Name | Adenomatous polyposis coli protein |
| Gene Name | APC |
| Cellular localization | Cell junction, adherens junction . Cytoplasm, cytoskeleton . Cell projection, lamellipodium . Cell projection, ruffle membrane . Cytoplasm . Cell membrane . Associated with the microtubule network at the growing distal tip of microtubules (PubMed:19632184). Accumulates in the lamellipodium and ruffle membrane in response to hepatocyte growth factor (HGF) treatment (PubMed:19151759). The MEMO1-RHOA-DIAPH1 signaling pathway controls localization of the phosphorylated form to the cell membrane (PubMed:20937854). . |
| Purification | The antibody was affinity-purified from rabbit antiserum by affinity-chromatography using epitope-specific immunogen. |

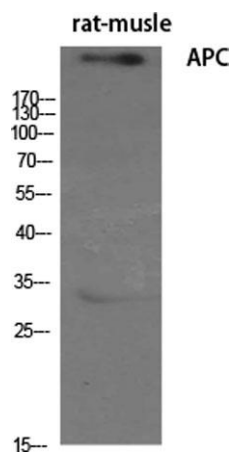




| | |
|--------------------------------|--|
| Clonality | Polyclonal |
| Concentration | 1 mg/ml |
| Observed band | 310kD |
| Human Gene ID | 324 |
| Human Swiss-Prot Number | P25054 |
| Alternative Names | APC; DP2.5; Adenomatous polyposis coli protein; Protein APC; Deleted in polyposis 2.5 |
| Background | This gene encodes a tumor suppressor protein that acts as an antagonist of the Wnt signaling pathway. It is also involved in other processes including cell migration and adhesion, transcriptional activation, and apoptosis. Defects in this gene cause familial adenomatous polyposis (FAP), an autosomal dominant pre-malignant disease that usually progresses to malignancy. Disease-associated mutations tend to be clustered in a small region designated the mutation cluster region (MCR) and result in a truncated protein product. [provided by RefSeq, Jul 2008], |



Immunofluorescence analysis of HeLa cell. 1, APC Polyclonal Antibody (red) was diluted at 1:200 (4° overnight). Galectin-3 Monoclonal Antibody (6G2) (green) was diluted at 1:200 (4° overnight). 2, Goat Anti Rabbit Alexa Fluor 594 Catalog: RS3611 was diluted at 1

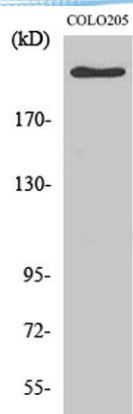


Western Blot analysis of various cells using APC Polyclonal Antibody diluted at 1:500



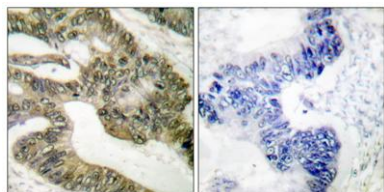


ELK Biotechnology



Western Blot analysis of COLO205 cells using APC
Polyclonal Antibody diluted at 1:500

Immunohistochemistry analysis of paraffin-embedded
human colon carcinoma tissue, using APC Antibody. The
picture on the right is blocked with the synthesized
peptide.



+86-27-59760950

ELKbio@ELKbiotech.com

www.elkbiotech.com

23-2, No.388 Gaoxin 2nd Road, Wuhan East Lake Hi-tech Development Zone, Hubei, P.R.C.