

Annexin VI rabbit pAb

Cat No.:ES1658

For research use only

Overview

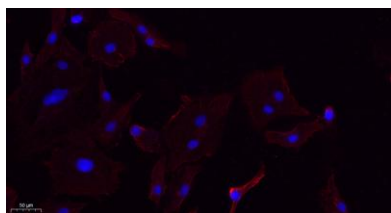
Product Name	Annexin VI rabbit pAb
Host species	Rabbit
Applications	WB;IHC;IF;ELISA
Species Cross-Reactivity	Human;Rat;Mouse;
Recommended dilutions	Western Blot: 1/500 - 1/2000. IHC-p: 1:100-300 ELISA: 1/20000. IF 1:100-300 Not yet tested in other applications.
Immunogen	The antiserum was produced against synthesized peptide derived from human Annexin A6. AA range:1-50
Specificity	Annexin VI Polyclonal Antibody detects endogenous levels of Annexin VI protein.
Formulation	Liquid in PBS containing 50% glycerol, 0.5% BSA and 0.02% sodium azide.
Storage	Store at -20°C. Avoid repeated freeze-thaw cycles.
Protein Name	Annexin A6
Gene Name	ANXA6
Cellular localization	Cytoplasm . Melanosome . Identified by mass spectrometry in melanosome fractions from stage I to stage IV.
Purification	The antibody was affinity-purified from rabbit antiserum by affinity-chromatography using epitope-specific immunogen.
Clonality	Polyclonal
Concentration	1 mg/ml
Observed band	75kD
Human Gene ID	309
Human Swiss-Prot Number	P08133
Alternative Names	ANXA6; ANX6; Annexin A6; 67 kDa calelectrin; Annexin VI; Annexin-6; Calphobindin-II; CPB-II; Chromobindin-20; Lipocortin VI; Protein III; p68; p70
Background	Annexin VI belongs to a family of calcium-dependent membrane and phospholipid binding proteins.



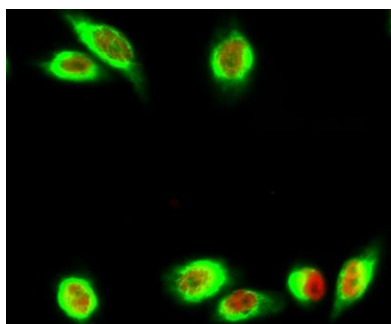


Several members of the annexin family have been implicated in membrane-related events along exocytotic and endocytotic pathways. The annexin VI gene is approximately 60 kbp long and contains 26 exons. It encodes a protein of about 68 kDa that consists of eight 68-amino acid repeats separated by linking sequences of variable lengths. It is highly similar to human annexins I and II sequences, each of which contain four such repeats. Annexin VI has been implicated in mediating the endosome aggregation and vesicle fusion in secreting epithelia during exocytosis. Alternatively spliced transcript variants have been described. [provided by RefSeq, Aug 2010],

Immunofluorescence analysis of A549. 1,primary Antibody(red) was diluted at 1:200(4°C overnight). 2, Goat Anti Rabbit IgG (H&L) - Alexa Fluor 594 Secondary antibody was diluted at 1:1000(room temperature, 50min).3, Picture B: DAPI(blue) 10min.

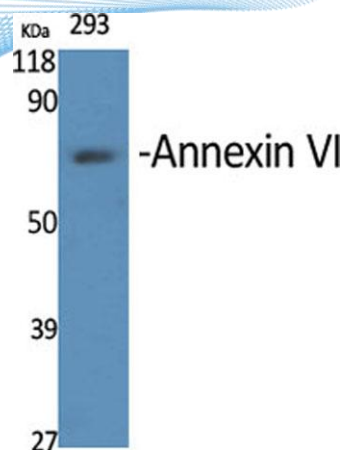


Immunofluorescence analysis of Hela cell. 1,Annexin VI Polyclonal Antibody(green) was diluted at 1:200(4° overnight). (red) was diluted at 1:200(4° overnight). 2, Goat Anti Rabbit Alexa Fluor 488 Catalog:RS3211 was diluted at 1:1000(room temperature, 50min). Goat Anti Mouse Alexa Fluor 594 Catalog:RS3608 was diluted at 1:1000(room temperature, 50min).

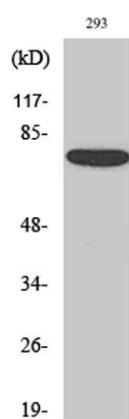




ELK Biotechnology



Western Blot analysis of various cells using Annexin VI
Polyclonal Antibody diluted at 1:2000



Western Blot analysis of 293 cells using Annexin VI
Polyclonal Antibody diluted at 1:2000



+86-27-59760950

ELKbio@ELKbiotech.com

www.elkbiotech.com

23-2, No.388 Gaoxin 2nd Road, Wuhan East Lake Hi-tech Development Zone, Hubei, P.R.C.