



AIG-1 rabbit pAb

Cat No.:ES1616

For research use only

Overview

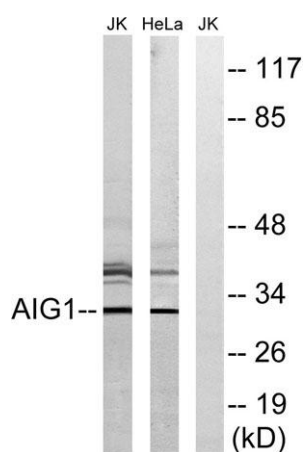
Product Name	AIG-1 rabbit pAb
Host species	Rabbit
Applications	WB;ELISA
Species Cross-Reactivity	Human;Rat;Mouse;
Recommended dilutions	Western Blot: 1/500 - 1/2000. ELISA: 1/40000. Not yet tested in other applications.
Immunogen	The antiserum was produced against synthesized peptide derived from human AIG1. AA range:196-245
Specificity	AIG-1 Polyclonal Antibody detects endogenous levels of AIG-1 protein.
Formulation	Liquid in PBS containing 50% glycerol, 0.5% BSA and 0.02% sodium azide.
Storage	Store at -20°C. Avoid repeated freeze-thaw cycles.
Protein Name	Androgen-induced gene 1 protein
Gene Name	AIG1
Cellular localization	Cell membrane ; Multi-pass membrane protein .
Purification	The antibody was affinity-purified from rabbit antiserum by affinity-chromatography using epitope-specific immunogen.
Clonality	Polyclonal
Concentration	1 mg/ml
Observed band	32kD
Human Gene ID	51390
Human Swiss-Prot Number	Q9NVV5
Alternative Names	AIG1; CGI-103; Androgen-induced gene 1 protein; AIG-1
Background	function:May play a role in androgen-regulated growth of hair follicles.,induction:By dihydrotestosterone (DHT).,similarity:Belongs to the AIG1 family.,tissue specificity:Highly expressed in heart, ovary, testis, liver, and kidney, at lower levels in spleen, prostate, brain, skeletal muscle, pancreas,



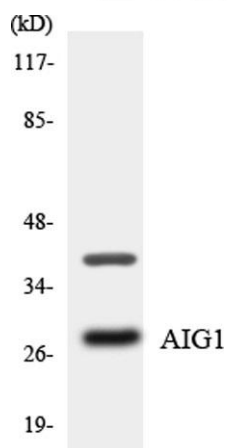


small intestine and colon, and undetected in peripheral blood leukocytes, thymus, lung and placenta. AIG1 expression is higher in hair follicles from males than from females.,

Western Blot analysis of various cells using AIG-1 Polyclonal Antibody



Western blot analysis of lysates from HeLa and Jurkat cells, using AIG1 Antibody. The lane on the right is blocked with the synthesized peptide.



Western blot analysis of the lysates from HT-29 cells using AIG1 antibody.

