

# AHA-1 rabbit pAb

Cat No.:ES1612

For research use only

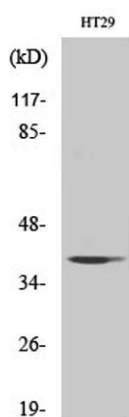
## Overview

Product Name	AHA-1 rabbit pAb
Host species	Rabbit
Applications	WB;IHC;IF;ELISA
Species Cross-Reactivity	Human;Rat;Mouse;
Recommended dilutions	Western Blot: 1/500 - 1/2000. Immunohistochemistry: 1/100 - 1/300;ELISA 1:5000-20000. Not yet tested in other applications.
Immunogen	The antiserum was produced against synthesized peptide derived from human AHSA1. AA range:161-210
Specificity	AHA-1 Polyclonal Antibody detects endogenous levels of AHA-1 protein.
Formulation	Liquid in PBS containing 50% glycerol, 0.5% BSA and 0.02% sodium azide.
Storage	Store at -20°C. Avoid repeated freeze-thaw cycles.
Protein Name	Activator of 90 kDa heat shock protein ATPase homolog 1
Gene Name	AHSA1
Cellular localization	Cytoplasm, cytosol . Endoplasmic reticulum . May transiently interact with the endoplasmic reticulum.
Purification	The antibody was affinity-purified from rabbit antiserum by affinity-chromatography using epitope-specific immunogen.
Clonality	Polyclonal
Concentration	1 mg/ml
Observed band	38kD
Human Gene ID	10598
Human Swiss-Prot Number	O95433
Alternative Names	AHSA1; C14orf3; HSPC322; Activator of 90 kDa heat shock protein ATPase homolog 1; AHA1; p38 function:Cochaperone that stimulates HSP90 ATPase activity (By similarity). May affect a step in the endoplasmic reticulum to Golgi
Background	

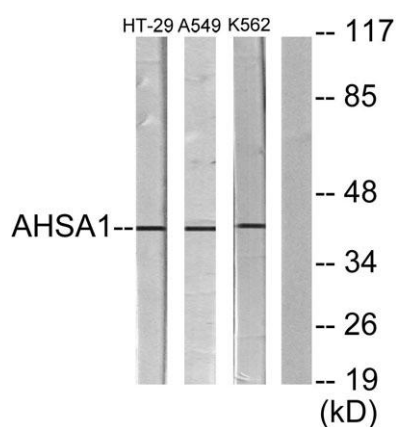




trafficking.,induction:By heat shock and treatment with the HSP90 inhibitor 17-demethoxygeldanamycin (17AAG).,similarity:Belongs to the AHA1 family.,subcellular location:May transiently interact with the endoplasmic reticulum.,subunit:Interacts with HSPCA/HSP90 and with the cytoplasmic tail of the vesicular stomatitis virus glycoprotein (VSV G). Interacts with GCH1.,tissue specificity:Expressed in numerous tissues, including brain, heart, skeletal muscle and kidney and, at lower levels, liver and placenta.,



Western Blot analysis of various cells using AHA-1  
Polyclonal Antibody diluted at 1:1000

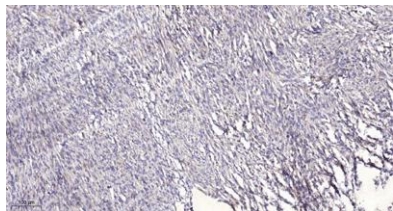


Western blot analysis of lysates from HT-29, A549, and K562 cells, using AHSA1 Antibody. The lane on the right is blocked with the synthesized peptide.





**ELK Biotechnology**



Immunohistochemical analysis of paraffin-embedded human Colon cancer. 1, Antibody was diluted at 1:200(4° overnight). 2, Tris-EDTA,pH9.0 was used for antigen retrieval. 3,Secondary antibody was diluted at 1:200(room temperature, 45min).



+86-27-59760950

[ELKbio@ELKbiotech.com](mailto:ELKbio@ELKbiotech.com)

[www.elkbiotech.com](http://www.elkbiotech.com)

23-2, No.388 Gaoxin 2nd Road,Wuhan East Lake Hi-tech Development Zone, Hubei , P.R.C