

Actin-κ rabbit pAb

Cat No.:ES1596

For research use only

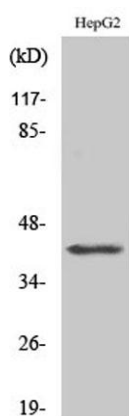
Overview

Product Name	Actin-κ rabbit pAb
Host species	Rabbit
Applications	WB;ELISA
Species Cross-Reactivity	Human;Mouse
Recommended dilutions	Western Blot: 1/500 - 1/2000. ELISA: 1/20000. Not yet tested in other applications.
Immunogen	The antiserum was produced against synthesized peptide derived from human ACTBL2. AA range:81-130
Specificity	Actin-κ Polyclonal Antibody detects endogenous levels of Actin-κ protein.
Formulation	Liquid in PBS containing 50% glycerol, 0.5% BSA and 0.02% sodium azide.
Storage	Store at -20°C. Avoid repeated freeze-thaw cycles.
Protein Name	Beta-actin-like protein 2
Gene Name	ACTBL2
Cellular localization	Cytoplasm, cytoskeleton .
Purification	The antibody was affinity-purified from rabbit antiserum by affinity-chromatography using epitope-specific immunogen.
Clonality	Polyclonal
Concentration	1 mg/ml
Observed band	40kD
Human Gene ID	345651
Human Swiss-Prot Number	Q562R1
Alternative Names	ACTBL2; Beta-actin-like protein 2; Kappa-actin
Background	function:Actins are highly conserved proteins that are involved in various types of cell motility and are ubiquitously expressed in all eukaryotic cells.,miscellaneous:In vertebrates 3 main groups of actin isoforms, alpha, beta and gamma have been identified. The alpha actins are found in muscle tissues and are a major constituent of the

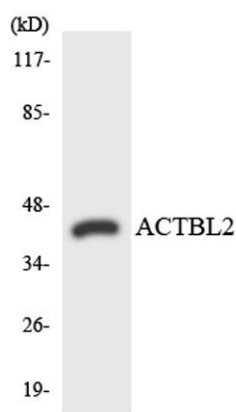




contractile apparatus. The beta and gamma actins coexist in most cell types as components of the cytoskeleton and as mediators of internal cell motility.,similarity:Belongs to the actin family.,subunit:Polymerization of globular actin (G-actin) leads to a structural filament (F-actin) in the form of a two-stranded helix. Each actin can bind to 4 others (By similarity). Interacts with PFN1 and PFDN1.,



Western Blot analysis of various cells using Actin-κ Polyclonal Antibody



Western blot analysis of the lysates from HUVECcells using ACTBL2 antibody.

