



Actinin- α 1/2/3/4 rabbit pAb

Cat No.:ES1593

For research use only

Overview

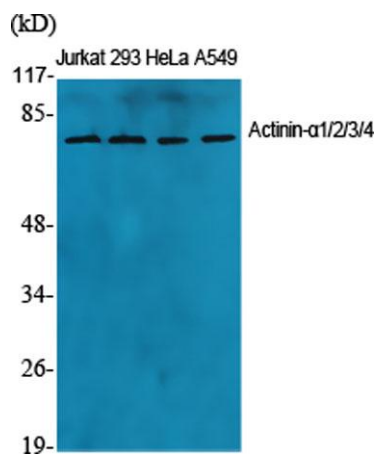
Product Name	Actinin- α 1/2/3/4 rabbit pAb
Host species	Rabbit
Applications	WB;IHC;IF;ELISA
Species Cross-Reactivity	Human;Mouse;Rat
Recommended dilutions	Western Blot: 1/500 - 1/2000. Immunohistochemistry: 1/100 - 1/300. ELISA: 1/20000. Not yet tested in other applications.
Immunogen	The antiserum was produced against synthesized peptide derived from human ACTN1/2/3/4. AA range:21-70
Specificity	Actinin- α 1/2/3/4 Polyclonal Antibody detects endogenous levels of Actinin- α 1/2/3/4 protein.
Formulation	Liquid in PBS containing 50% glycerol, 0.5% BSA and 0.02% sodium azide.
Storage	Store at -20°C. Avoid repeated freeze-thaw cycles.
Protein Name	Alpha-actinin-1/2/3/4
Gene Name	ACTN1/2/3/4
Cellular localization	Cytoplasm, cytoskeleton . Cytoplasm, myofibril, sarcomere, Z line . Cell membrane . Cell junction . Cell projection, ruffle . Colocalizes with MYO22 and PPP3CA at the Z-line of heart and skeletal muscle. Colocalizes with PSD in membrane ruffles and central reticular structures. .
Purification	The antibody was affinity-purified from rabbit antiserum by affinity-chromatography using epitope-specific immunogen.
Clonality	Polyclonal
Concentration	1 mg/ml
Observed band	75kD
Human Gene ID	87/88/89/81
Human Swiss-Prot Number	P12814/P35609/Q08043/O43707
Alternative Names	ACTN1; Alpha-actinin-1; Alpha-actinin cytoskeletal isoform; F-actin cross-linking protein; Non-muscle





Background

alpha-actinin-1; ACTN2; Alpha-actinin-2; Alpha-actinin skeletal muscle isoform 2; F-actin cross-linking protein; ACTN3; Alpha-actinin-3; Alpha actinins belong to the spectrin gene superfamily which represents a diverse group of cytoskeletal proteins, including the alpha and beta spectrins and dystrophins. Alpha actinin is an actin-binding protein with multiple roles in different cell types. In nonmuscle cells, the cytoskeletal isoform is found along microfilament bundles and adherens-type junctions, where it is involved in binding actin to the membrane. In contrast, skeletal, cardiac, and smooth muscle isoforms are localized to the Z-disc and analogous dense bodies, where they help anchor the myofibrillar actin filaments. This gene encodes a nonmuscle, cytoskeletal, alpha actinin isoform and maps to the same site as the structurally similar erythroid beta spectrin gene. Three transcript variants encoding different isoforms have been found for this gene. [provided by RefSeq, Jul 2008],

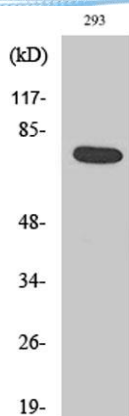


Western Blot analysis of various cells using
Actinin-α1/2/3/4 Polyclonal Antibody diluted at 1:1000

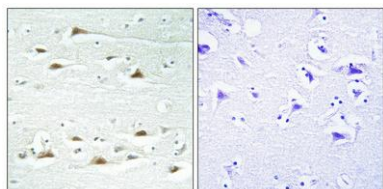




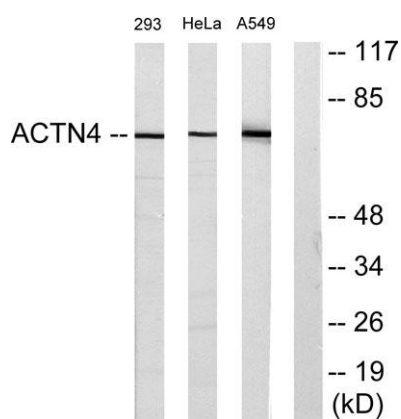
ELK Biotechnology



Western Blot analysis of A549 cells using Actinin- α 1/2/3/4 Polyclonal Antibody diluted at 1:1000



Immunohistochemical analysis of paraffin-embedded Human brain. Antibody was diluted at 1:100(4° overnight). High-pressure and temperature Tris-EDTA, pH8.0 was used for antigen retrieval. Negative control (right) obtained from antibody was pre-absorbed by i



Western blot analysis of lysates from 293, HeLa, and A549 cells, using ACTN1/2/3/4 Antibody. The lane on the right is blocked with the synthesized peptide.



+86-27-59760950

ELKbio@ELKbiotech.com

www.elkbiotech.com

23-2, No.388 Gaoxin 2nd Road, Wuhan East Lake Hi-tech Development Zone, Hubei, P.R.C