

# Actin $\alpha$ 1 rabbit pAb

Cat No.:ES1590

For research use only

## Overview

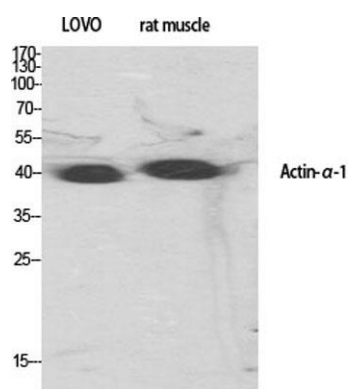
Product Name	Actin $\alpha$ 1 rabbit pAb
Host species	Rabbit
Applications	WB;IHC;IF;ELISA
Species Cross-Reactivity	Human;Mouse;Rat
Recommended dilutions	Western Blot: 1/500 - 1/2000. Immunohistochemistry: 1/100 - 1/300. ELISA: 1/20000. Not yet tested in other applications.
Immunogen	The antiserum was produced against synthesized peptide derived from human Actin- $\alpha$ 1. AA range:1-50
Specificity	Actin $\alpha$ 1 Polyclonal Antibody detects endogenous levels of Actin $\alpha$ 1 protein.
Formulation	Liquid in PBS containing 50% glycerol, 0.5% BSA and 0.02% sodium azide.
Storage	Store at -20°C. Avoid repeated freeze-thaw cycles.
Protein Name	Actin alpha skeletal muscle
Gene Name	ACTA1
Cellular localization	Cytoplasm, cytoskeleton.
Purification	The antibody was affinity-purified from rabbit antiserum by affinity-chromatography using epitope-specific immunogen.
Clonality	Polyclonal
Concentration	1 mg/ml
Observed band	45kD
Human Gene ID	58
Human Swiss-Prot Number	P68133
Alternative Names	ACTA1; ACTA; Actin; $\alpha$ skeletal muscle; Alpha-actin-1
Background	The product encoded by this gene belongs to the actin family of proteins, which are highly conserved proteins that play a role in cell motility, structure and integrity. Alpha, beta and gamma actin isoforms have been identified, with alpha actins being a



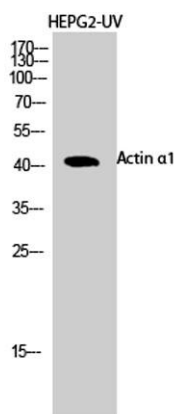


major constituent of the contractile apparatus, while beta and gamma actins are involved in the regulation of cell motility. This actin is an alpha actin that is found in skeletal muscle. Mutations in this gene cause nemaline myopathy type 3, congenital myopathy with excess of thin myofilaments, congenital myopathy with cores, and congenital myopathy with fiber-type disproportion, diseases that lead to muscle fiber defects. [provided by RefSeq, Jul 2008],

Western Blot analysis of various cells using Actin  $\alpha 1$   
Polyclonal Antibody diluted at 1:500

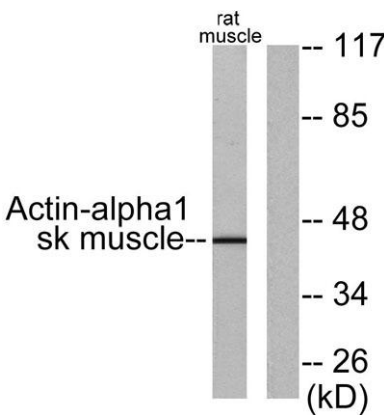
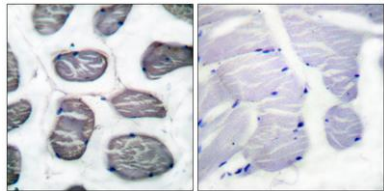


Western Blot analysis of HEPG2-UV cells using Actin  $\alpha 1$   
Polyclonal Antibody diluted at 1:500





Immunohistochemistry analysis of paraffin-embedded human muscle tissue, using Actin-alpha-1 Antibody. The picture on the right is blocked with the synthesized peptide.



Western blot analysis of lysates from rat muscle cells, using Actin-alpha-1 Antibody. The lane on the right is blocked with the synthesized peptide.

