

A Cyclase I rabbit pAb

Cat No.:ES1554

For research use only

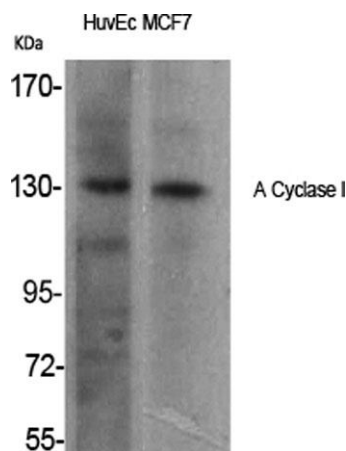
Overview

Product Name	A Cyclase I rabbit pAb
Host species	Rabbit
Applications	WB;IHC;IF;ELISA
Species Cross-Reactivity	Human;Mouse
Recommended dilutions	Western Blot: 1/500 - 1/2000. Immunohistochemistry: 1/100 - 1/300. ELISA: 1/40000. Not yet tested in other applications.
Immunogen	The antiserum was produced against synthesized peptide derived from human ADCY1. AA range:231-280
Specificity	A Cyclase I Polyclonal Antibody detects endogenous levels of A Cyclase I protein.
Formulation	Liquid in PBS containing 50% glycerol, 0.5% BSA and 0.02% sodium azide.
Storage	Store at -20°C. Avoid repeated freeze-thaw cycles.
Protein Name	Adenylate cyclase type 1
Gene Name	ADCY1
Cellular localization	Membrane ; Multi-pass membrane protein . Cell membrane ; Multi-pass membrane protein . Cytoplasm . Membrane raft . Expressed in the cytoplasm of supporting cells and hair cells of the cochlea vestibule, as well as to the cochlear hair cell nuclei and ster
Purification	The antibody was affinity-purified from rabbit antiserum by affinity-chromatography using epitope-specific immunogen.
Clonality	Polyclonal
Concentration	1 mg/ml
Observed band	130kD
Human Gene ID	107
Human Swiss-Prot Number	Q08828
Alternative Names	ADCY1; Adenylate cyclase type 1; ATP pyrophosphate-lyase 1; Adenylate cyclase type I;

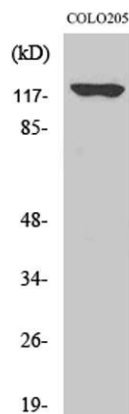
Background

Adenylyl cyclase 1; Ca(2+)/calmodulin-activated adenylyl cyclase

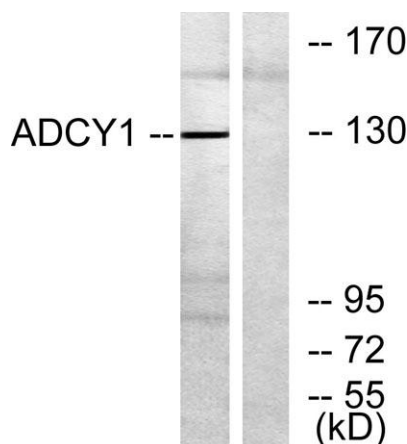
This gene encodes a member of the of adenylate cyclase gene family that is primarily expressed in the brain. This protein is regulated by calcium/calmodulin concentration and may be involved in brain development. Alternate splicing results in multiple transcript variants. [provided by RefSeq, Aug 2013],



Western Blot analysis of various cells using A Cyclase I Polyclonal Antibody



Western Blot analysis of COLO205 cells using A Cyclase I Polyclonal Antibody



Western blot analysis of lysates from COLO205 cells, using ADCY1 Antibody. The lane on the right is blocked with the synthesized peptide.



ELK Biotechnology

