



## 4.1G rabbit pAb

Cat No.:ES1549

For research use only

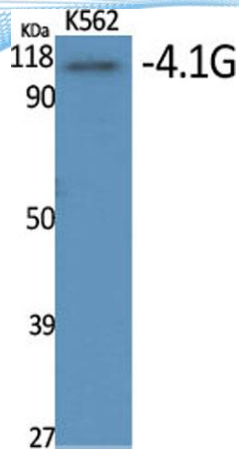
### Overview

<b>Product Name</b>	4.1G rabbit pAb
<b>Host species</b>	Rabbit
<b>Applications</b>	WB;IHC;IF;ELISA
<b>Species Cross-Reactivity</b>	Human;Rat;Mouse;
<b>Recommended dilutions</b>	Western Blot: 1/500 - 1/2000. Immunohistochemistry: 1/100 - 1/300. ELISA: 1/40000. Not yet tested in other applications.
<b>Immunogen</b>	Synthesized peptide derived from 4.1G . at AA range: 530-610
<b>Specificity</b>	4.1G Polyclonal Antibody detects endogenous levels of 4.1G protein.
<b>Formulation</b>	Liquid in PBS containing 50% glycerol, 0.5% BSA and 0.02% sodium azide.
<b>Storage</b>	Store at -20°C. Avoid repeated freeze-thaw cycles.
<b>Protein Name</b>	Band 4.1-like protein 2
<b>Gene Name</b>	EPB41L2
<b>Cellular localization</b>	Cytoplasm, cytoskeleton . Cytoplasm, cell cortex . Cell membrane .
<b>Purification</b>	The antibody was affinity-purified from rabbit antiserum by affinity-chromatography using epitope-specific immunogen.
<b>Clonality</b>	Polyclonal
<b>Concentration</b>	1 mg/ml
<b>Observed band</b>	112kD
<b>Human Gene ID</b>	2037
<b>Human Swiss-Prot Number</b>	O43491
<b>Alternative Names</b>	EPB41L2; Band 4.1-like protein 2; Generally expressed protein 4.1; 4.1G
<b>Background</b>	PTM:Phosphorylated upon DNA damage, probably by ATM or ATR.,similarity:Contains 1 FERM domain.,subunit:The CTD domain interacts with FKBP2 (By similarity). Interacts with FCGR1A.,tissue specificity:Widely expressed.,

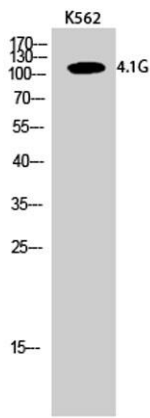




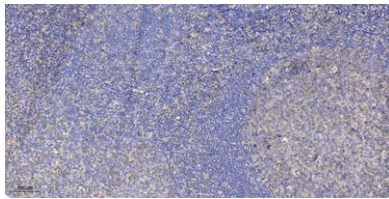
**ELK Biotechnology**



Western Blot analysis of various cells using 4.1G Polyclonal Antibody



Western Blot analysis of K562 cells using 4.1G Polyclonal Antibody



Immunohistochemical analysis of paraffin-embedded human tonsil. 1, Antibody was diluted at 1:200(4° overnight). 2, Tris-EDTA,pH9.0 was used for antigen retrieval. 3,Secondary antibody was diluted at 1:200(room temperature, 30min).



+86-27-59760950

[ELKbio@ELKbiotech.com](mailto:ELKbio@ELKbiotech.com)

[www.elkbiotech.com](http://www.elkbiotech.com)

23-2, No.388 Gaoxin 2nd Road,Wuhan East Lake Hi-tech Development Zone, Hubei , P.R.C