



# Lyn (phospho Tyr508) rabbit pAb

Cat No.:ES1474

For research use only

## Overview

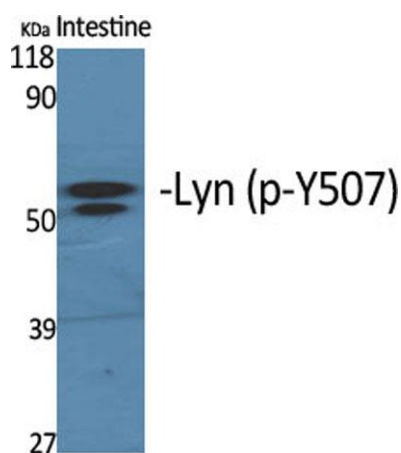
Product Name	Lyn (phospho Tyr508) rabbit pAb
Host species	Rabbit
Applications	WB;IHC;IF;ELISA
Species Cross-Reactivity	Human;Mouse;Rat
Recommended dilutions	Western Blot: 1/500 - 1/2000. Immunohistochemistry: 1/100 - 1/300. ELISA: 1/10000. Not yet tested in other applications.
Immunogen	The antiserum was produced against synthesized peptide derived from human Lyn around the phosphorylation site of Tyr507. AA range:463-512
Specificity	Phospho-Lyn (Y508) Polyclonal Antibody detects endogenous levels of Lyn protein only when phosphorylated at Y508.
Formulation	Liquid in PBS containing 50% glycerol, 0.5% BSA and 0.02% sodium azide.
Storage	Store at -20°C. Avoid repeated freeze-thaw cycles.
Protein Name	Tyrosine-protein kinase Lyn
Gene Name	LYN
Cellular localization	Cell membrane. Nucleus. Cytoplasm. Cytoplasm, perinuclear region. Golgi apparatus. Membrane ; Lipid-anchor . Accumulates in the nucleus by inhibition of CRM1-mediated nuclear export. Nuclear accumulation is increased by inhibition of its kinase activity. The trafficking from the Golgi apparatus to the plasma membrane occurs in a kinase domain-dependent but kinase activity independent manner and is mediated by exocytic vesicular transport. Detected on plasma membrane lipid rafts.
Purification	The antibody was affinity-purified from rabbit antiserum by affinity-chromatography using epitope-specific immunogen.
Clonality	Polyclonal



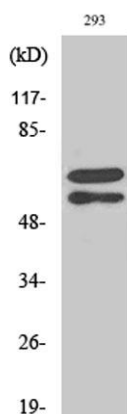


Concentration	1 mg/ml
Observed band	53,56kD
Human Gene ID	4067
Human Swiss-Prot Number	P07948
Alternative Names	LYN; JTK8; Tyrosine-protein kinase Lyn; Lck/Yes-related novel protein tyrosine kinase; V-yes-1 Yamaguchi sarcoma viral related oncogene homolog; p53Lyn; p56Lyn

**Background** This gene encodes a tyrosine protein kinase, which maybe involved in the regulation of mast cell degranulation, and erythroid differentiation. Alternatively spliced transcript variants encoding different isoforms have been found for this gene. [provided by RefSeq, Jul 2011],

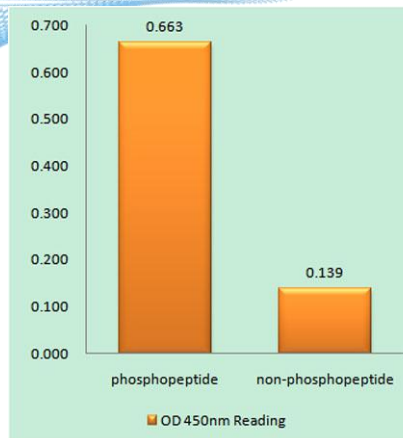


Western Blot analysis of various cells using Phospho-Lyn (Y508) Polyclonal Antibody diluted at 1:1000



Western Blot analysis of 293 cells using Phospho-Lyn (Y508) Polyclonal Antibody diluted at 1:1000





Enzyme-Linked Immunosorbent Assay (Phospho-ELISA) for Immunogen Phosphopeptide (Phospho-left) and Non-Phosphopeptide (Phospho-right), using Lyn (Phospho-Tyr507) Antibody

Immunohistochemistry analysis of paraffin-embedded human brain, using Lyn (Phospho-Tyr507) Antibody. The picture on the right is blocked with the phospho peptide.

