

Integrin $\beta 3$ (phospho Tyr785) rabbit pAb

Cat No.:ES1446

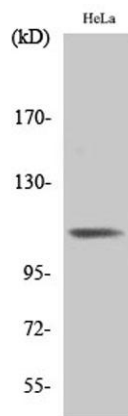
For research use only

Overview

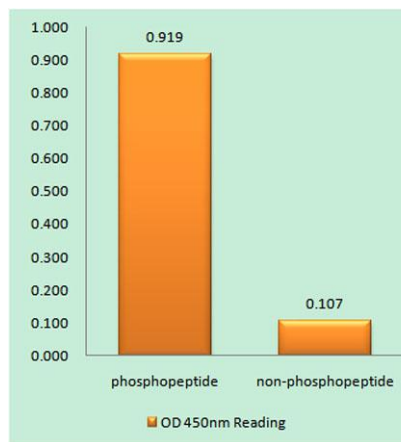
Product Name	Integrin $\beta 3$ (phospho Tyr785) rabbit pAb
Host species	Rabbit
Applications	IF;ELISA;IHC
Species Cross-Reactivity	Human;Mouse;Rat
Recommended dilutions	IF/ICC 1:50-300; ELISA 1:2000-20000; IHC-p 1:50-200
Immunogen	The antiserum was produced against synthesized peptide derived from human Integrin beta3 around the phosphorylation site of Tyr785. AA range:739-788
Specificity	Phospho-Integrin $\beta 3$ (Y785) Polyclonal Antibody detects endogenous levels of Integrin $\beta 3$ protein only when phosphorylated at Y785.
Formulation	Liquid in PBS containing 50% glycerol, 0.5% BSA and 0.02% sodium azide.
Storage	Store at -20°C. Avoid repeated freeze-thaw cycles.
Protein Name	Integrin beta-3
Gene Name	ITGB3
Cellular localization	Cell membrane ; Single-pass type I membrane protein . Cell projection, lamellipodium membrane . Cell junction, focal adhesion . Cell junction, synapse, postsynaptic cell membrane ; Single-pass type I membrane protein . Cell junction, synapse .
Purification	The antibody was affinity-purified from rabbit antiserum by affinity-chromatography using epitope-specific immunogen.
Clonality	Polyclonal
Concentration	1 mg/ml
Observed band	87kD
Human Gene ID	3690
Human Swiss-Prot Number	P05106
Alternative Names	ITGB3; GP3A; Integrin beta-3; Platelet membrane glycoprotein IIIa; GPIIIa; CD antigen CD61
Background	The ITGB3 protein product is the integrin beta chain



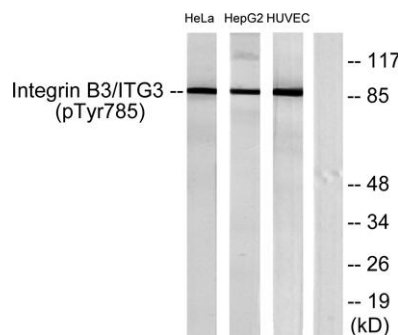
beta 3. Integrins are integral cell-surface proteins composed of an alpha chain and a beta chain. A given chain may combine with multiple partners resulting in different integrins. Integrin beta 3 is found along with the alpha IIb chain in platelets. Integrins are known to participate in cell adhesion as well as cell-surface mediated signalling. [provided by RefSeq, Jul 2008],



Western Blot analysis of various cells using Phospho-Integrin $\beta 3$ (Y785) Polyclonal Antibody diluted at 1:500



Enzyme-Linked Immunosorbent Assay (Phospho-ELISA) for Immunogen Phosphopeptide (Phospho-left) and Non-Phosphopeptide (Phospho-right), using Integrin beta3 (Phospho-Tyr785) Antibody

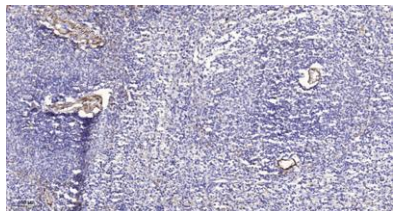


Western blot analysis of lysates from HeLa cells, HepG2 cells and HUVEC cells, using Integrin beta3 (Phospho-Tyr785) Antibody. The lane on the right is blocked with the phospho peptide.





ELK Biotechnology



Immunohistochemical analysis of paraffin-embedded human spleen. 1, Antibody was diluted at 1:200(4° overnight). 2, Tris-EDTA,pH9.0 was used for antigen retrieval. 3,Secondary antibody was diluted at 1:200(room temperature, 45min).



+86-27-59760950

ELKbio@ELKbiotech.com

www.elkbiotech.com

23-2, No.388 Gaoxin 2nd Road,Wuhan East Lake Hi-tech Development Zone, Hubei , P.R.C